



610-638-1221
sales@trenchdrain.com
 PO BOX 377 - FREMONT, OH 43420

PROJECT ID: _____
 CONTRACT NO: _____

LOCATION: _____

RELEASED: 1.18.24
 REVISION: -

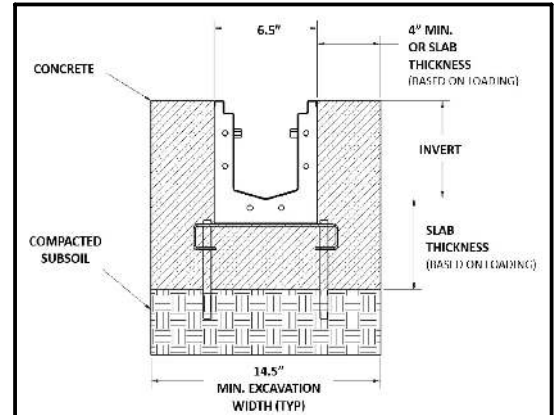
SS0605HB - SS0625HB

SS600 SERIES STANDARD HALF CHANNELS WITH BOTTOM OUTLET

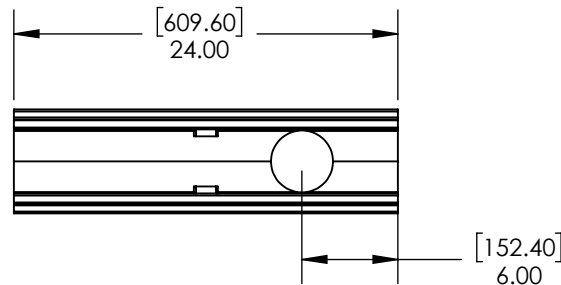
PART NO.	DEPTH	SLOPE
SS0605HB	6.00 [152.40]	NEUTRAL
SS0610HB	8.50 [215.90]	
SS0615HB	11.00 [279.40]	
SS0625HB	16.00 [406.40]	

ALL CHANNELS MADE FROM 16GA (0.062") 304 STAINLESS STEEL.

CUSTOM CHANNEL LENGTHS AND MATERIAL AVAILABLE UPON REQUEST.

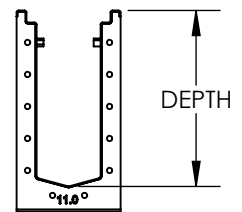
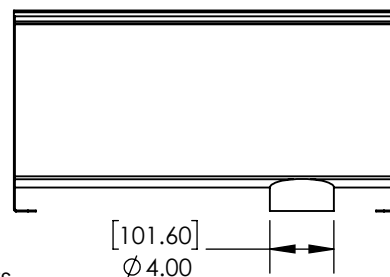
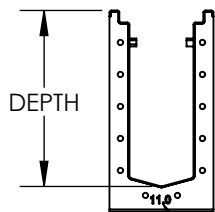


SPECIFYING ENGINEER IS RESPONSIBLE FOR CONCRETE ENCASEMENT AND REINFORCING BASED UPON APPLICATION AND LOCAL CODES



INLET

OUTLET



CHANNEL INVERTS ARE ETCHED INTO CHANNEL SUPPORTS TO IDENTIFY SLOPE

TDS RECOMMENDS USING A 4" FERNCO FITTING TO CONNECT OUTLET TO PLUMBING. (NOT INCLUDED)



DISCLAIMER - The customer and the customer's architects, engineers, consultants and other professionals are completely responsible for the selection, installation and maintenance of any product purchased from Trench Drain Systems and/or its manufacturers. TRENCH DRAIN SYSTEMS MAKES NO WARRANTY, EXPRESS OR IMPLIED, AS TO THE SUITABILITY, DESIGN, MERCHANTABILITY, OR FITNESS OF THE PRODUCT FOR CUSTOMERS APPLICATION. The drawing and information provided remain the property and copyright of the manufacturer listed. The manufacturer reserves the right to modify specification without notice.