

Maxi 400 System Ductile Grate / E600 / ADA

Product Specifications

Part. No.
865-M16PN00EA

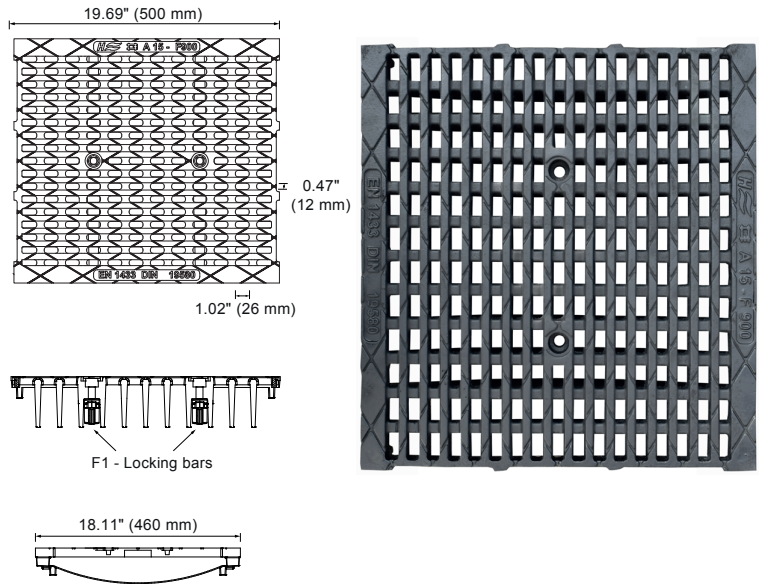
Load Class:
E600 (132,000 lbs) according EN 1433
Certified by MPA-HB (independent laboratories)

Material: Ductile Iron GJS-500-7
Locking: F1 Locking system with traffic-safe screws

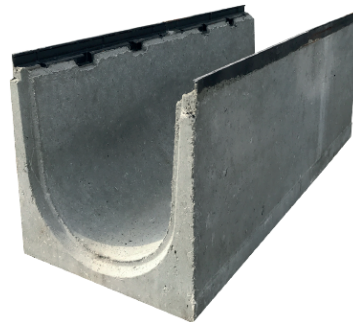
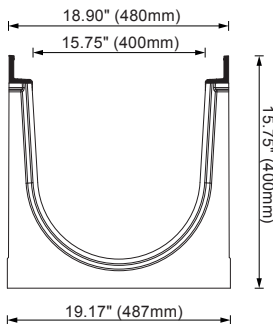
Surface:
Longitudinal slot design (0.47" x 1.02") ensures high water intake. Slots according ADA Standards

Weight: 78.48 lbs (35.6 kg)
Water intake: 189.9 in² (1225 cm²) per meter

Use:
This grate is designed for use with HydroTec Maxi 400 channels made of fiber reinforced concrete with a ductile iron edge protection.



Fiber Reinforced Concrete Channel



System Specifications

Grate:
The grate is made of ductile iron and certified to EN 1433 Load Class F900.

F1-Locking System:
The F1-Locking system is locked by 4 screws per meter, that can be opened by using a 1/2" multi-tooth nut. The screws fix the grate to the channel body by using the F1-Locking bars.

Maxi 400 Channel:
The channel body is made of fiber reinforced concrete with a ductile iron edge protection. Connecting profiles at the end of the channel guarantee an easy and fast installation.

