

# TRENCH DRAIN CATCH BASIN

▶▶ 865 SERIES

HydroTec™

## SPECIFICATION

Sioux Chief 865 Series HydroTec Maxi 200 fiber-reinforced concrete catch basin shall be used where necessary for surface drainage. Catch basin shall incorporate a galvanized debris basket, ductile iron edge rails and Class F, ADA-compliant ductile iron grate. All concrete thickness and reinforcement per structural engineer's specification for the application. Designed in accordance with ASME A112.6.3

## MATERIALS

**Catch Basin:** Fiber-reinforced concrete

**Edge Rails:** Ductile iron

**Grating:** Ductile iron (ASTM A536 70-50-05)

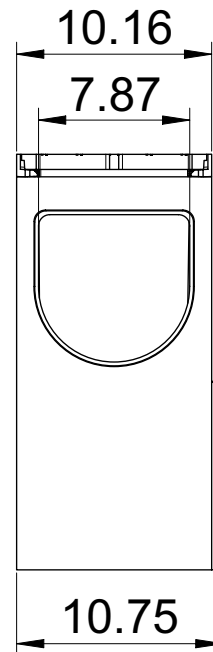
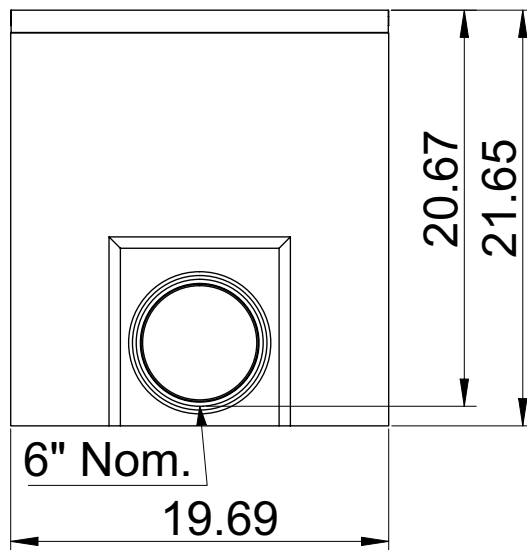
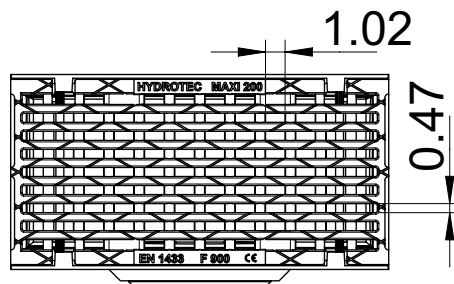
## GRATE INTAKE AREA

47.2 in<sup>2</sup>

## LOAD RATING

DIN EN 1433 - Class F

ITEM # SUBMITTED	_____
JOB NAME	_____
LOCATION	_____
ENGINEER	_____
CONTRACTOR	_____
PO#	_____ TAG _____



Item Number

**865-M8CBFA**

Accessories - Available Separately:  
 865-8LR: Grate-locking rod for Maxi 200 System  
 865-6PC: PVC S&D connection pipe for 6" Nom. outlets  
 865-TOOL: Grate-locking tool