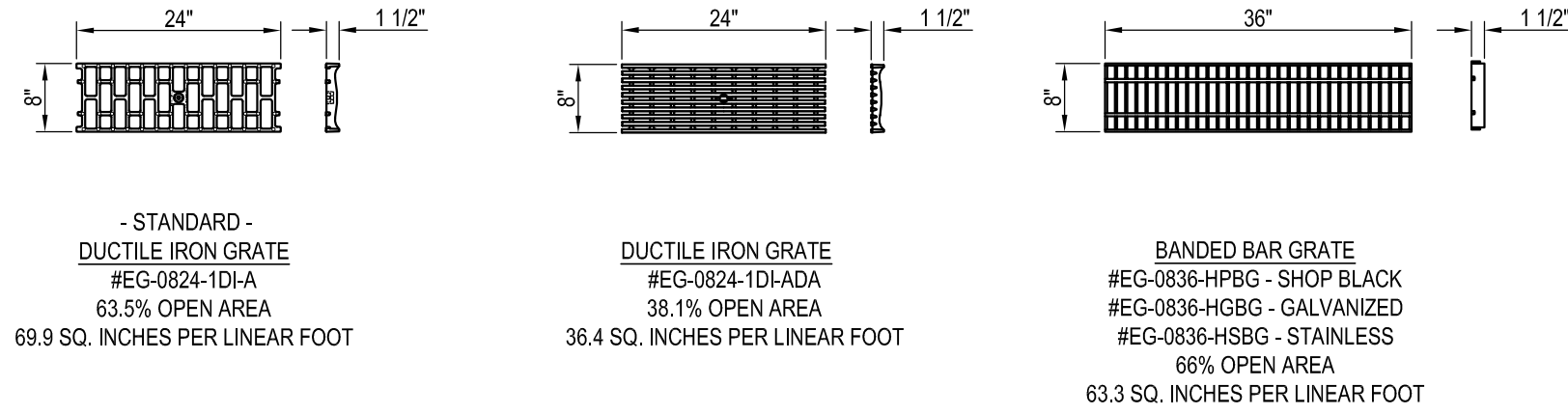
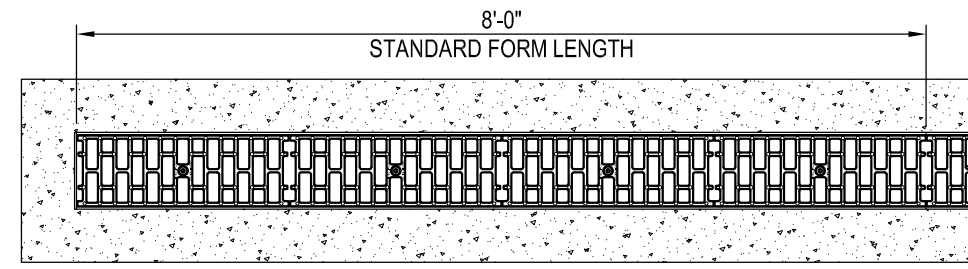


EconoDrain® Series #6
STANDARD EPS FORMS



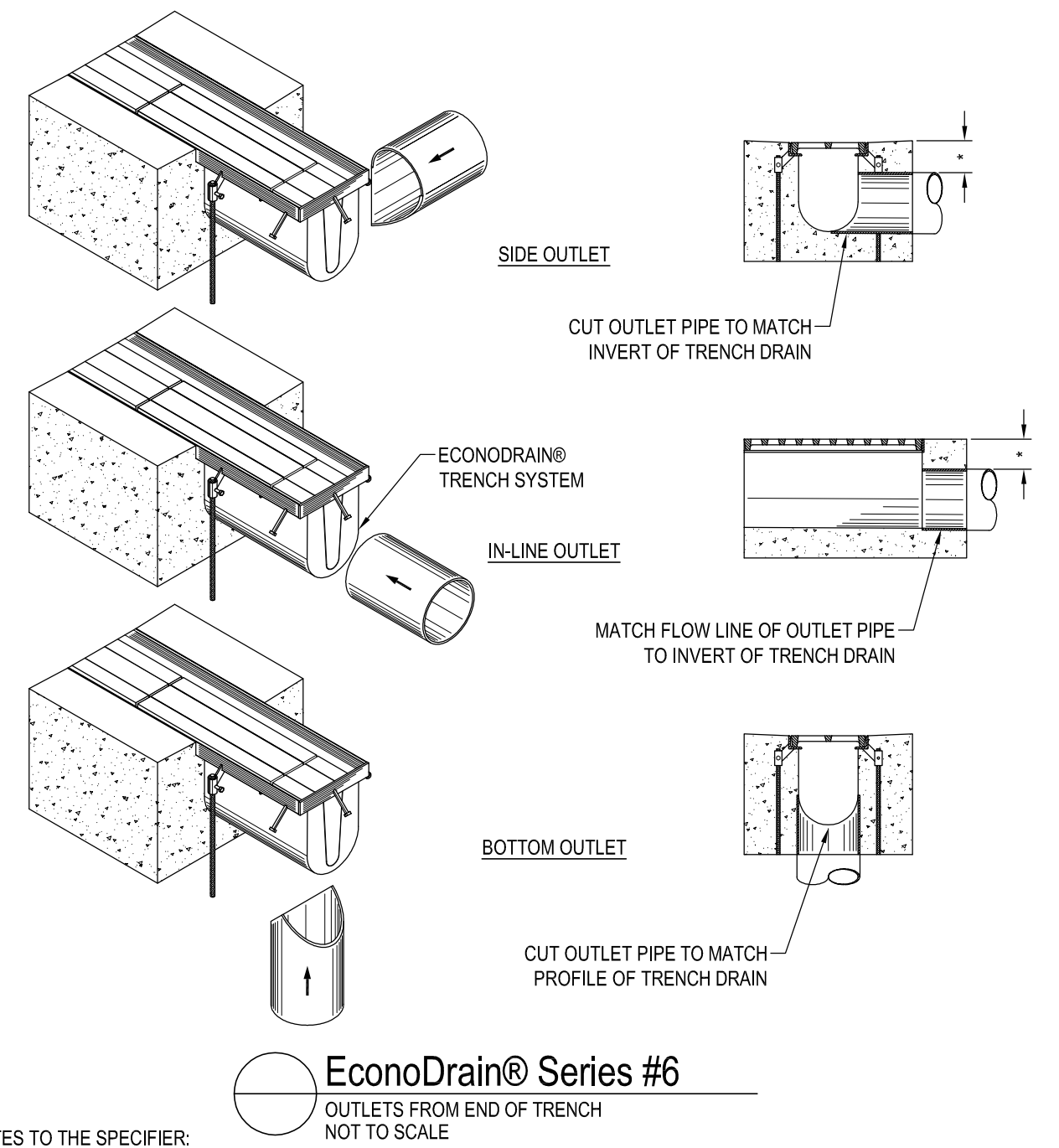
EconoDrain® Series #6
GRATE SELECTION



EconoDrain® Series #6
FINISHED PLAN VIEW

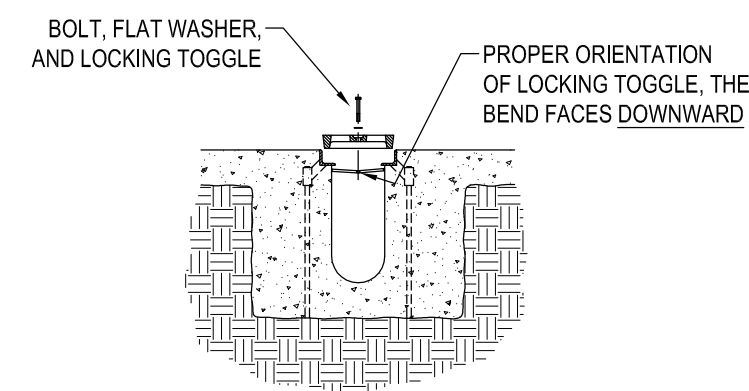
EPS FORM	DEPTH		FLOW GPM
	MIN	MAX	
06	6"	6 1/2"	200
07	6 1/2"	7"	228
08	7"	7 1/2"	257
09	7 1/2"	8"	286
10	8"	8 1/2"	315
11	8 1/2"	9"	345
12	9"	9 1/2"	374
13	9 1/2"	10"	404
14	10"	10 1/2"	433
15	10 1/2"	11"	463
16	11"	11 1/2"	493
17	11 1/2"	12"	523
18	12"	12 1/2"	553
19	12 1/2"	13"	583
20	13"	13 1/2"	613
21	13 1/2"	14"	643
22	14"	14 1/2"	673
23	14 1/2"	15"	704
24	15"	15 1/2"	734
25	15 1/2"	16"	764
26	16"	16 1/2"	794
27	16 1/2"	17"	824
28	17"	17 1/2"	855
29	17 1/2"	18"	885
30	18"	18 1/2"	915
31	18 1/2"	19"	946
32	19"	19 1/2"	976
33	19 1/2"	20"	1006
34	20"	20 1/2"	1037
35	20 1/2"	21"	1067
36	21"	21 1/2"	1098
37	21 1/2"	22"	1128
38	22"	22 1/2"	1158
39	22 1/2"	23"	1189
40	23"	23 1/2"	1219
41	23 1/2"	24"	1250
42	24"	24 1/2"	1280
43	24 1/2"	25"	1311
44	25"	25 1/2"	1341
45	25 1/2"	26"	1372

EPS FORM CHART

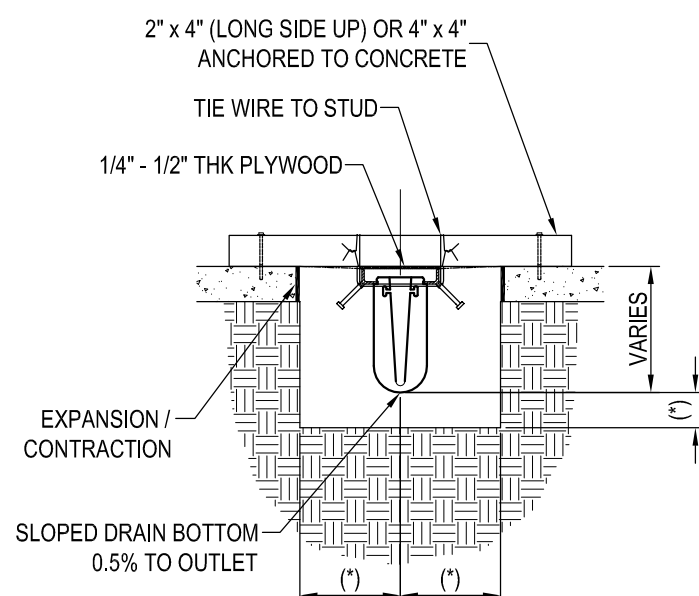


EconoDrain® Series #6
OUTLETS FROM END OF TRENCH
NOT TO SCALE

NOTES TO THE SPECIFIER:
1. ADD REBAR AS REQUIRED.
2. SPECIFY MINIMUM CONCRETE ENCASEMENT.
3. 4" MINIMUM CONCRETE COVERAGE OF OUTLET PIPE IS RECOMMENDED (LABELED WITH '1').
4. FINAL CONCRETE THICKNESS PER LOCAL ENGINEERING REGULATIONS AND GUIDELINES.
CONSTRUCTION NOTES:
1. INSTALLATION TO BE COMPLETED IN ACCORDANCE WITH MANUFACTURERS SPECIFICATIONS.
2. SECURE OUTLET PIPE PRIOR TO CONCRETING OPERATIONS.
3. FOR ILLUSTRATION ONLY - DO NOT SCALE

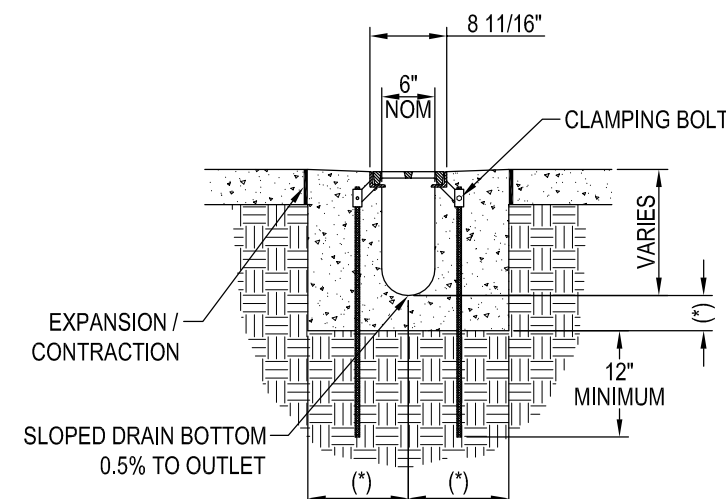


EconoDrain® Series #6
GRATE LOCKING DEVICE INSTALLATION



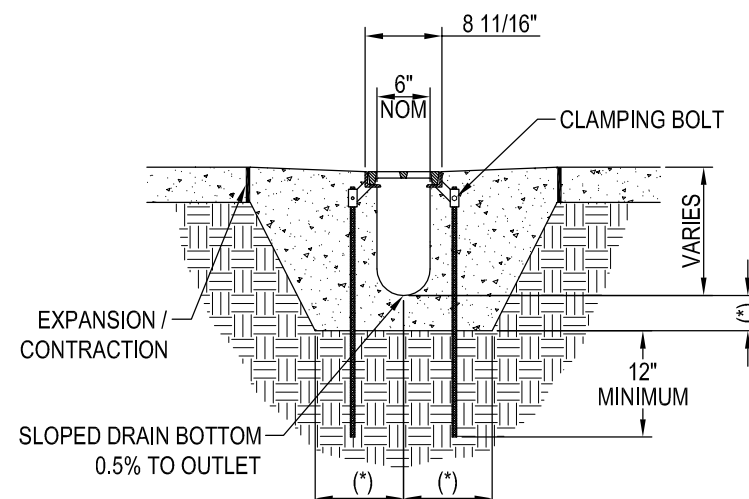
EconoDrain® Series #6
SUSPENDING FORMERS FROM EXISTING SLAB

- NOTES TO THE SPECIFIER:
1. ADD REBAR AS REQUIRED.
 2. SPECIFY REQUIRED DIMENSIONS LABELED WITH '1' USING 6" EACH SIDE OF STEEL FRAME AND BELOW EPS FORM AS A RECOMMENDED MINIMUM.
 3. SHOW TOP OF GRATE ELEVATION IN PLAN VIEW
 4. EXPANSION / CONTRACTION JOINT PER LOCAL ENGINEERING REGULATIONS AND GUIDELINES
 5. STANDARD CHANNEL LENGTH IS 8'-0" (96")
 6. STANDARD CHANNEL SLOPE IS 0.5%



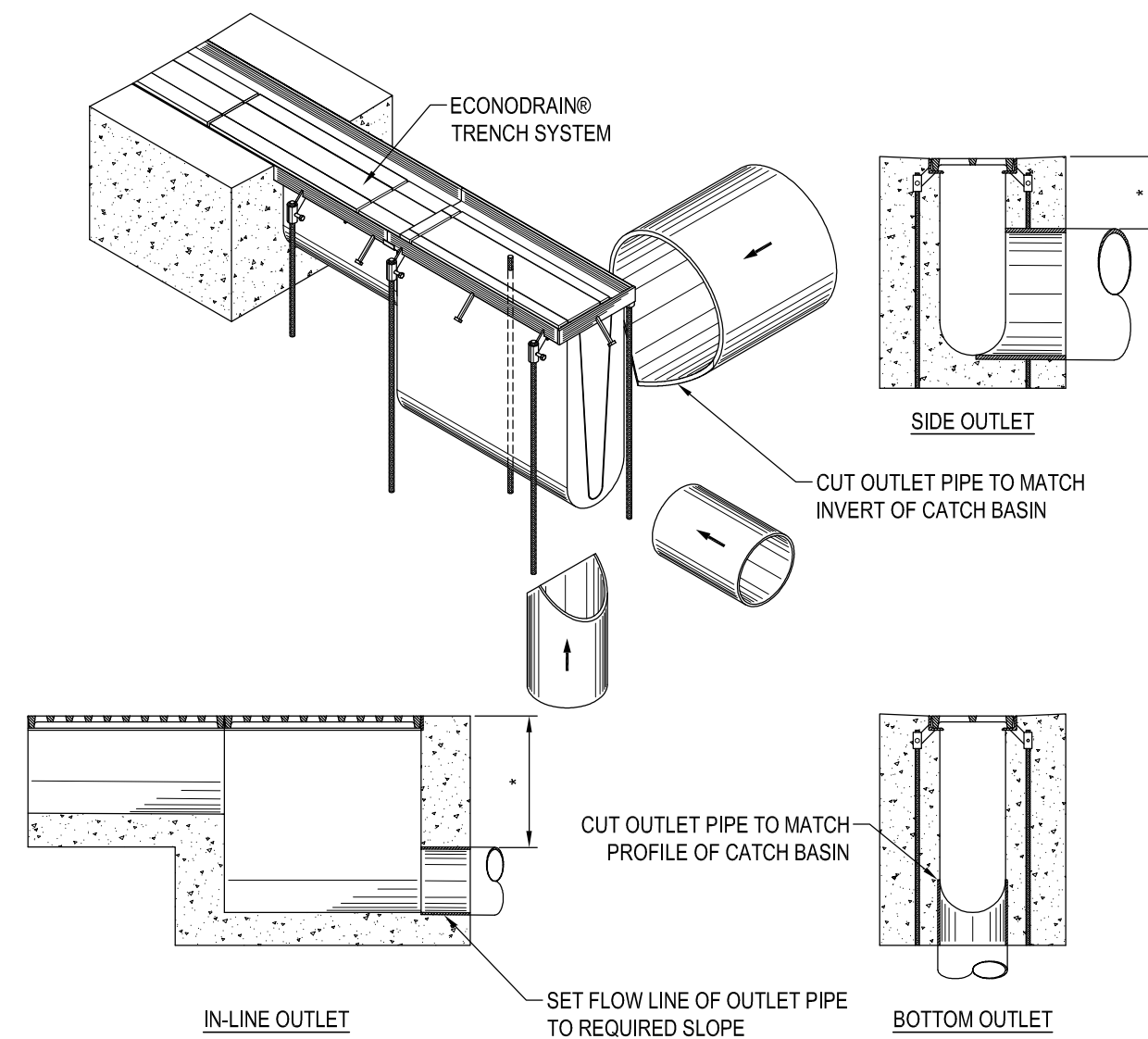
EconoDrain® Series #6
SAWCUT EXISTING SLAB INSTALLATION DETAIL

- NOTES TO THE SPECIFIER:
1. ADD REBAR AS REQUIRED.
 2. SPECIFY REQUIRED DIMENSIONS LABELED WITH '1' USING 6" EACH SIDE OF STEEL FRAME AND BELOW EPS FORM AS A RECOMMENDED MINIMUM.
 3. SHOW TOP OF GRATE ELEVATION IN PLAN VIEW
 4. EXPANSION / CONTRACTION JOINT PER LOCAL ENGINEERING REGULATIONS AND GUIDELINES
 5. STANDARD CHANNEL LENGTH IS 8'-0" (96")
 6. STANDARD CHANNEL SLOPE IS 0.5%



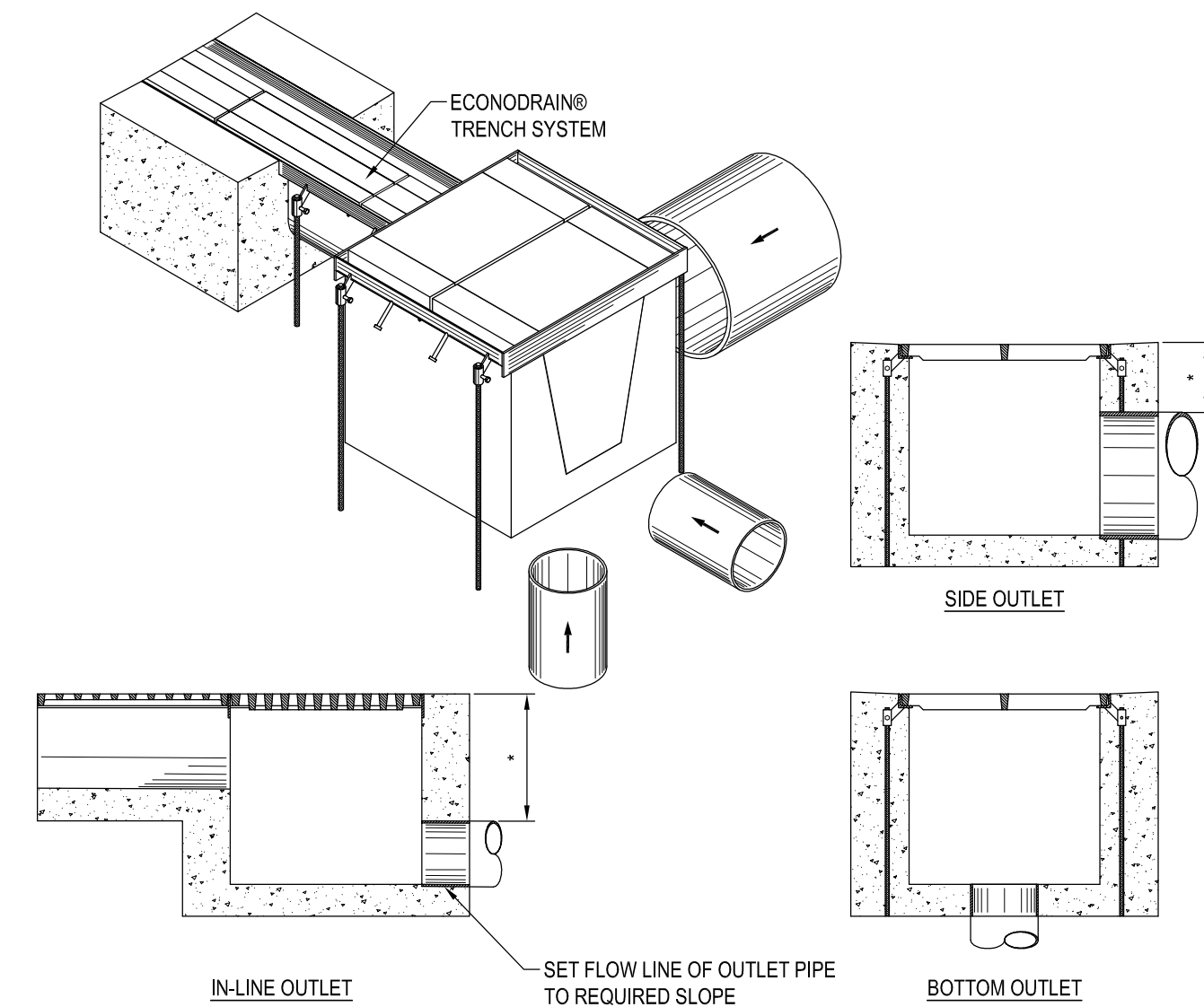
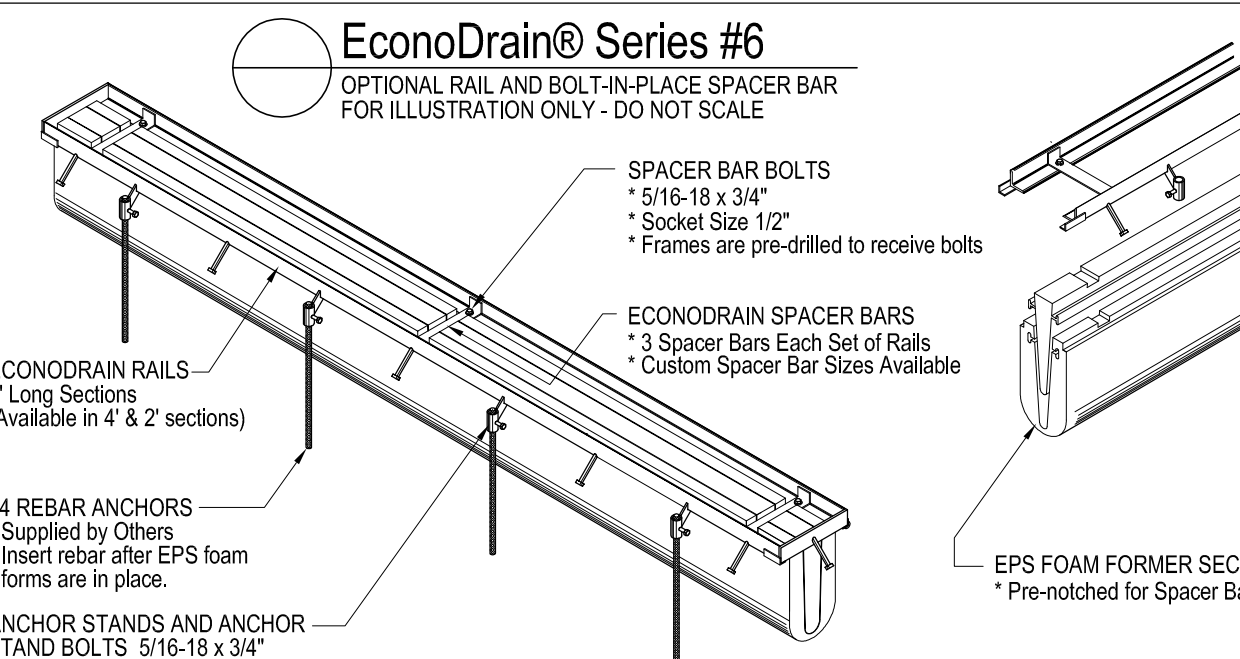
EconoDrain® Series #6
MONOLITHIC POUR INSTALLATION DETAIL

- NOTES TO THE SPECIFIER:
1. ADD REBAR AS REQUIRED.
 2. SPECIFY REQUIRED DIMENSIONS LABELED WITH '1' USING 6" EACH SIDE OF STEEL FRAME AND BELOW EPS FORM AS A RECOMMENDED MINIMUM.
 3. SHOW TOP OF GRATE ELEVATION IN PLAN VIEW
 4. EXPANSION / CONTRACTION JOINT PER LOCAL ENGINEERING REGULATIONS AND GUIDELINES
 5. STANDARD CHANNEL LENGTH IS 8'-0" (96")
 6. STANDARD CHANNEL SLOPE IS 0.5%



EconoDrain® Series #6
OUTLETS FROM IN-LINE CATCH BASIN
NOT TO SCALE

- NOTES TO THE SPECIFIER:
1. ADD REBAR AS REQUIRED.
 2. SPECIFY MINIMUM CONCRETE ENCASEMENT.
 3. 4" MINIMUM CONCRETE COVERAGE OF OUTLET PIPE IS RECOMMENDED (LABELED WITH '1').
 4. FINAL CONCRETE THICKNESS PER LOCAL ENGINEERING REGULATIONS AND GUIDELINES.
- CONSTRUCTION NOTES:
1. INSTALLATION TO BE COMPLETED IN ACCORDANCE WITH MANUFACTURERS SPECIFICATIONS.
 2. SECURE OUTLET PIPE PRIOR TO CONCRETING OPERATIONS.
 3. FOR ILLUSTRATION ONLY - DO NOT SCALE



EconoDrain® Series #6
OUTLET FROM CATCH BASIN
NOT TO SCALE

- NOTES TO THE SPECIFIER:
1. ADD REBAR AS REQUIRED.
 2. SPECIFY MINIMUM CONCRETE ENCASEMENT.
 3. 4" MINIMUM CONCRETE COVERAGE OF OUTLET PIPE IS RECOMMENDED (LABELED WITH '1').
 4. FINAL CONCRETE THICKNESS PER LOCAL ENGINEERING REGULATIONS AND GUIDELINES.
- CONSTRUCTION NOTES:
1. INSTALLATION TO BE COMPLETED IN ACCORDANCE WITH MANUFACTURERS SPECIFICATIONS.
 2. SECURE OUTLET PIPE PRIOR TO CONCRETING OPERATIONS.
 3. FOR ILLUSTRATION ONLY - DO NOT SCALE

- GENERAL NOTES:
1. ALL DIMENSIONS SHOWN ARE NOMINAL.
 2. THIS SYSTEM AVAILABLE WITH PRE-WELDED GRATE FRAMES (STANDARD) OR RAILS WITH BOLT-IN PLACE SPACER BARS (OPTIONAL).

EconoDrain® Series #6
ENGINEERING / CONSTRUCTION DETAIL TEMPLATE
© 2014 MultiDrain Systems, Inc.