

POLYCAST®

900 Series

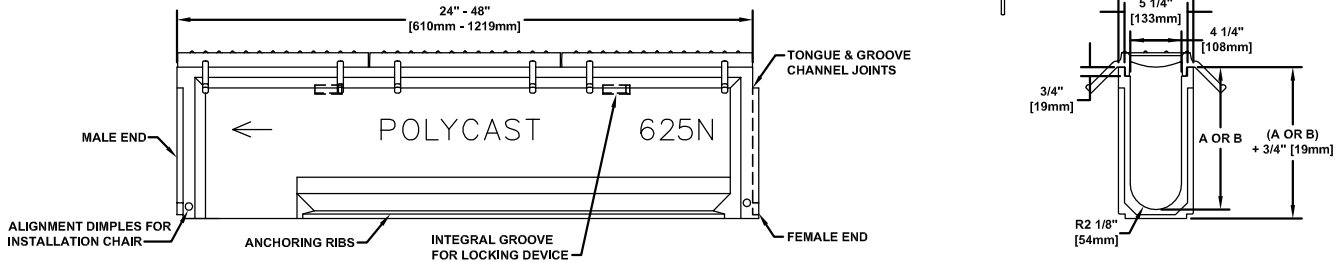
w/ Non-Removable Grates
Pre-Sloped Extra Heavy Duty System

PROJECT ID/ CONTRACT NO: _____

LOCATION: _____

ENGINEERING SPECIFICATION:

POLYCAST® 900 Series Pre-Sloped Trench Drain System is a .65% sloped trench drain, with 6 1/4" [159mm] wide x a nominal 48" [1219mm] long (standard) polyester polymer concrete channels with tongue and groove connections. Channels 605 / 610 / 615 / 620 / 625 and non-sloping (neutrals) will be supplied with drill out for a 4" [102mm] bottom outlet. Installation chairs and end caps with a 4" [102mm] drain drill out as required. Installation chairs are recommended for installation of drainage channels.



✓ Channel	Part No.
<input type="checkbox"/> Polyester Concrete Channels	DP06 __
<input type="checkbox"/> Vinyl Ester Concrete Channels	DV06 __

Grate Options (Select One)			
✓ Grate Type	Part No.	Load Class	
<input type="checkbox"/> One-Piece (Non-Removable) Ductile Frame & Grate	DG0900	Class F	
✓ Options (Select All That Apply)	Part No.	Additional Specifications:	
<input type="checkbox"/> Drain End Cap (6" Outlet)	DA0620D6		
<input type="checkbox"/> Installation Alignment Chair	DA0633		
<input type="checkbox"/> Extender Panels	DP0660		
<input type="checkbox"/> Shovel Head	DA0661		
<input type="checkbox"/> 4" Strainer (For Bottom/End Outlet)	DA0662		
<input type="checkbox"/> End Cap (Inlet/Outlet)	DA0670M/DA0670		
<input type="checkbox"/> Channel Adaptor (Male/Female)	DP0699M/DP0699F		

Meets the following Standards & Specifications:

- Federal Aviation Administration (FAA) Advisory Circular Airport Pavement Design and Evaluation (AC 150/5320-6D Appendix 3 Design of Structures for Heavy Aircraft)
- ASTM Standard D543, Test Method for Resistance of Plastics to Chemical Reagents
- ASTM Standard D570, Test Method for Water Absorption of Plastic
- ASTM Standard D576, Practice for Determination of Weight and Shape Change of Plastics Under Accelerated Service Conditions
- ASTM Standard G53, Recommended Practice for Operating Light and Water Exposure Apparatus for Exposure of Non-Metallic Materials
- ASTM Standard C78, Test Method for Flexural Strength of Concrete
- ASTM Standard C579, Test Method for Compressive Strength of Chemical Resistant Mortars and Monolithic Surfacing's
- ASTM Standard B117, Standard Practice for Operating Salt Spray (Fog) Apparatus
- AASHTO Highway Drainage Guidelines
- AASHTO Standard Specification for Highway Bridges
- Exceeds 686lbs/ft [10kN/m] pullout per Caltrans Specifications

POLYCAST®

900 Series

w/ Removable Grates

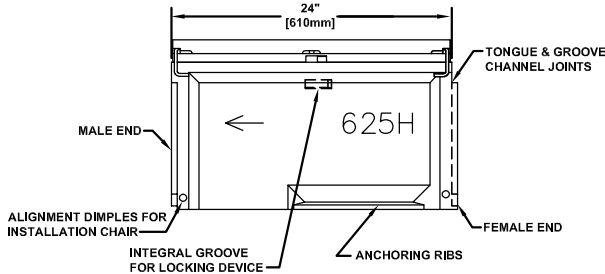
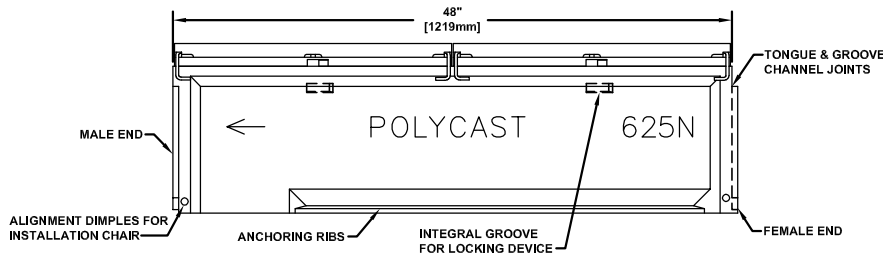
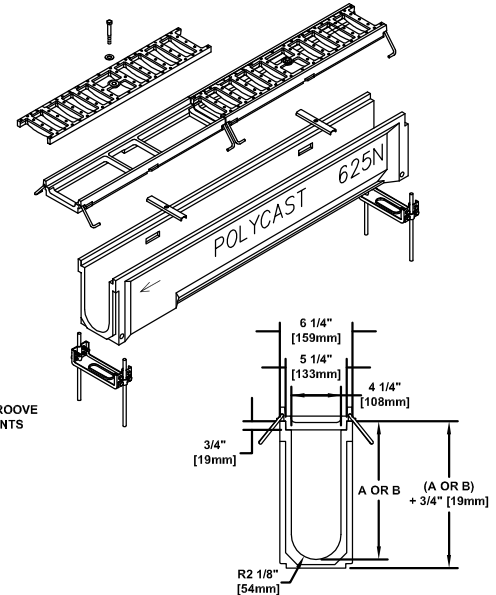
Pre-Sloped Extra Heavy Duty System

PROJECT ID/
CONTRACT NO: _____

LOCATION: _____

ENGINEERING SPECIFICATION:

POLYCAST® 900 Series Pre-Sloped Trench Drain System is a .65% sloped trench drain, with 6 1/4" [159mm] wide x a nominal 48" [1219mm] long (standard) polyester polymer concrete channels with tongue and groove connections. Channels 605 / 610 / 615 / 620 / 625, non-sloping (neutrals) and half channels 605H / 615H / 625H will be supplied with drill outs for a 4" [102mm] bottom outlet. Grating locking devices, installation chairs and end caps with a 4" [102mm] drain drill out as required. Locking devices engage the iron frame and stay clear of the channel flow area. Drain sidewall pockets are available to hang channels from edge of forms during construction. Installation chairs are recommended for installation of drainage channels.



Channel	Part No.
<input type="checkbox"/> Polyester Concrete Channels	DP06 __
<input type="checkbox"/> Vinyl Ester Concrete Channels	DV06 __

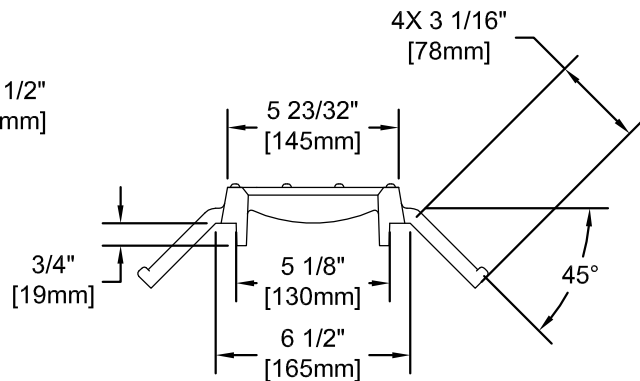
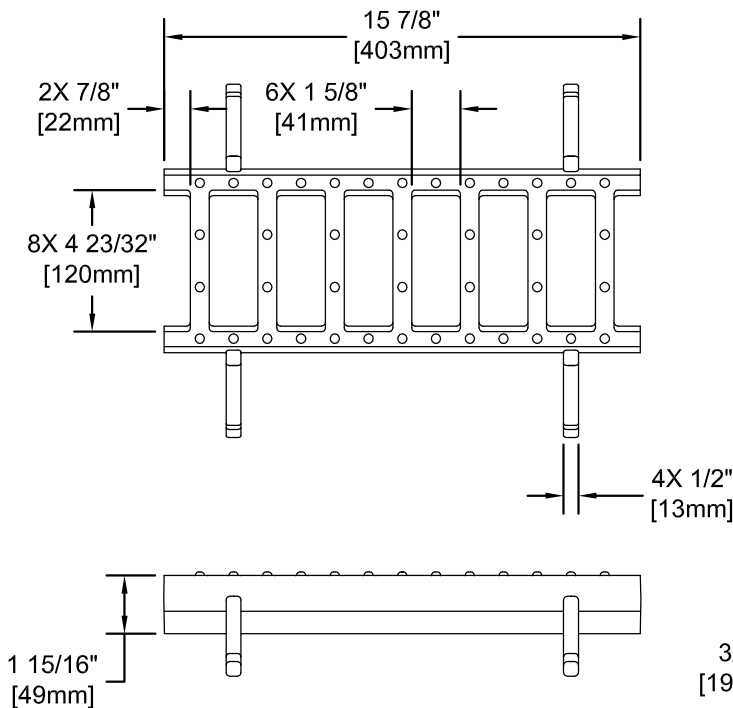
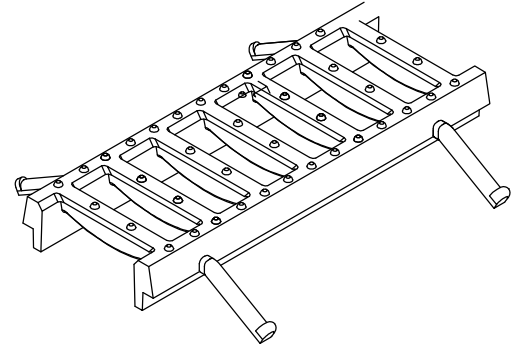
Grate Options (Select One)			
Grate Type	Part No.	Load Class	
<input checked="" type="checkbox"/> Cleanout (Removable) Frame w/Ductile Iron Slotted	DG0970 w/DG0941D	Class F	
Options (Select All That Apply)	Part No.	Additional Specifications:	
<input type="checkbox"/> Drain End Cap (6" Outlet)	DA0620D6		
<input type="checkbox"/> Installation Alignment Chair	DA0633		
<input type="checkbox"/> Extender Panels	DP0660		
<input type="checkbox"/> Shovel Head	DA0661		
<input type="checkbox"/> 4" Strainer (For Bottom/End Outlet)	DA0662		
<input type="checkbox"/> End Cap (Inlet/Outlet)	DA0670M/DA0670		
<input type="checkbox"/> Channel Adaptor (Male/Female)	DP0699M/DP0699F		
<input type="checkbox"/> Locking Device	DA0942		
<input type="checkbox"/> Stainless Steel Locking Device	DA0942S		

Meets the following Standards & Specifications:

- Federal Aviation Administration (FAA) Advisory Circular Airport Pavement Design and Evaluation (AC 150/5320-6D Appendix 3 Design of Structures for Heavy Aircraft)
- ASTM Standard D543, Test Method for Resistance of Plastics to Chemical Reagents
- ASTM Standard D570, Test Method for Water Absorption of Plastic
- ASTM Standard D576, Practice for Determination of Weight and Shape Change of Plastics Under Accelerated Service Conditions
- ASTM Standard G53, Recommended Practice for Operating Light and Water Exposure Apparatus for Exposure of Non-Metallic Materials
- ASTM Standard C78, Test Method for Flexural Strength of Concrete
- ASTM Standard C579, Test Method for Compressive Strength of Chemical Resistant Mortars and Monolithic Surfacing's
- ASTM Standard B117, Standard Practice for Operating Salt Spray (Fog) Apparatus
- AASHTO Highway Drainage Guidelines
- AASHTO Standard Specification for Highway Bridges
- Exceeds 343lbs/ft [5kn/m] pullout per Caltrans Specifications

ENGINEERING SPECIFICATION:

POLYCAST[®] Heavy Duty Ductile Iron Grate & Frame designed to support dynamic high speed wheel loads in excess of AASHTO H-20. The grate is one-piece and non-removable. The grate has 60% (54in²) of open area. The grate is made of ASTM A536 GR. 65-45-12 (ductile iron) and weighs approximately 15lbs [6.80kg]. The grate is only available in a 16" [406mm] length.



APPLICATION LOAD CLASS F:

Interstate highway traffic rated. High speed vehicles (roadway and runway applications). Designed for a distributed load of 900 psi (130,000psf).

MEETS THE FOLLOWING STANDARDS & SPECIFICATIONS:

- Federal Aviation Administration (FAA) Advisory Circular Airport Pavement Design and Evaluation (AC 150/5320-6D Appendix 3 Design of Structures for Heavy Aircraft)
- AASHTO Highway Drainage Guidelines
- AASHTO Standard Specification for Highway Bridges
- ASTM Standard B117, Standard Practice for Operating Salt Spray (Fog) Apparatus
- Exceeds 686lbs/ft [10kN/m] pullout per Caltrans Specifications