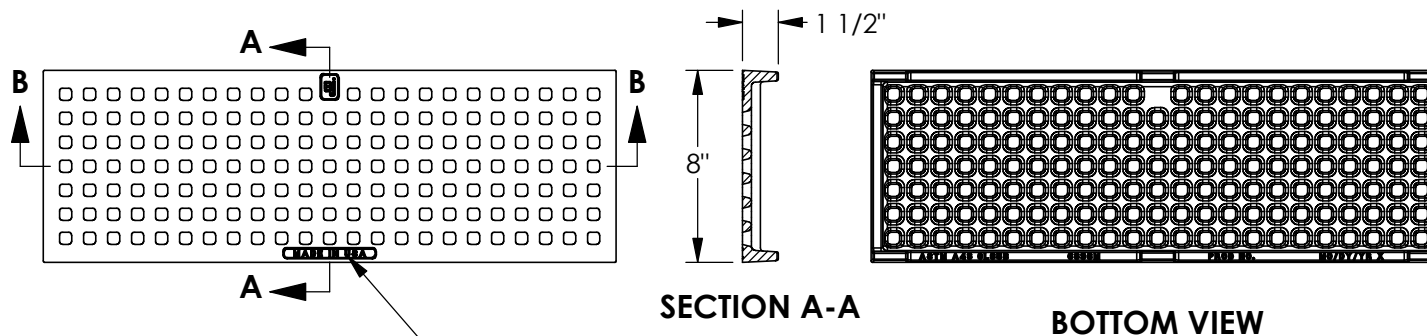
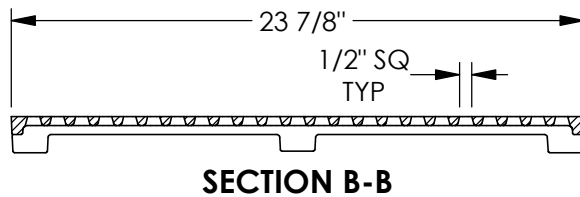


6898M MANHATTAN Trench Grate



1/4" SHARP FACE
GOTHIC



**NOTE: CASTING IS COATED WITH
BLACK POWDER COATING RAL9005**

Product Number

00689833P02

Design Features

- Materials
Gray Iron (CL35B)
- Design Load
Non-Traffic
- Open Area
37 sq. inches
- Coating
Powder - Black RAL9005
- √ Designates Machined Surface

Certification

- ASTM A48
-
-
- Country of Origin: USA

Drawing Revision

- 9/11/2012 Designer: DEF
- 9/18/2012 Revised By: DEF

Disclaimer

Weights (lbs/kg), dimensions (inches/mm) and drawings provided for your guidance. We reserve the right to modify specifications without prior notice.

CONFIDENTIAL: This drawing is the property of EJ Group, Inc. and embodies confidential information, registered marks, patents, trade secret information, and/or know how that is the property of EJ Group, Inc. Copyright © 2012 EJ Group, Inc. All rights reserved.

Contact

800 626 4653
ejco.com