



610-638-1221
sales@trenchdrain.com
 PO BOX 377 - FREMONT, OH 43420

PROJECT ID: _____
 CONTRACT NO: _____
 LOCATION: _____

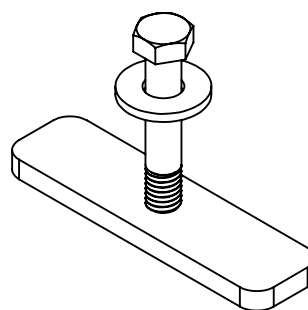
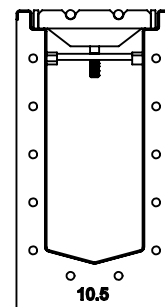
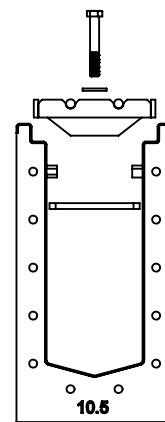
RELEASED: 1.17.24
 REVISION: B

SS0642B

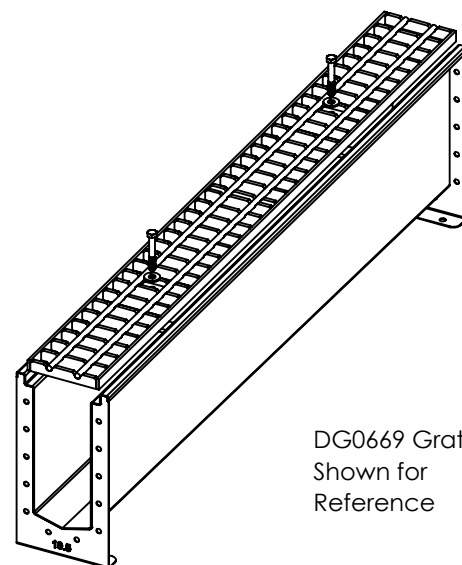
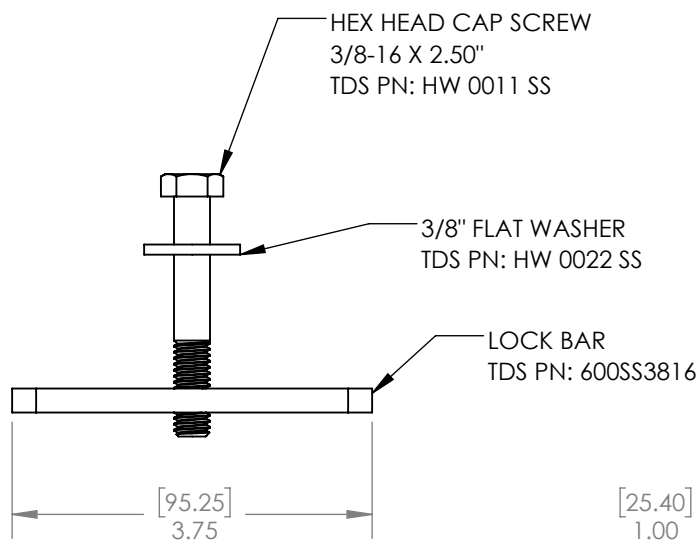
LOCKING DEVICE FOR TDS SS600 SERIES W/DUCTILE IRON & STAINLESS BAR GRATE

GRATE TYPE	PART NO.		DIN LOAD CLASS
	24.00"	48.00"	
DUCTILE IRON SLOTTED	DG0641D	N/A	D
DUCTILE IRON SOLID (ADA COMPLIANT)	DG0641S	N/A	D
STAINLESS STEEL BAR	DG0669H	DG0669	D
DUCTILE IRON LONGITUDINAL SLOTTED (ADA COMPLIANT)	DG0675HD	N/A	D
DUCTILE IRON PATRIOT	DG0692	N/A	C

GRATE INSTALLATION



TRENCH DRAIN SYSTEMS SS0642B SERIES LOCKING DEVICES ARE TO BE USED WITH ALL GRATING SYSTEMS WHERE WHEEL TRAFFIC OCCURS. THIS IS NECESSARY TO PROVIDE SYSTEM INTEGRITY. USED ON TDS SS600 SERIES SYSTEM WITH DUCTILE IRON AND STAINLESS BAR GRATES.



DG0669 Grate
 Shown for
 Reference

DISCLAIMER - The customer and the customer's architects, engineers, consultants, and other professionals are completely responsible for the selection installation and maintenance of any product purchased from Trench Drain Systems and/or its manufacturers. TRENCH DRAIN SYSTEMS MAKES NO WARRANTY, EXPRESS OR IMPLIED, AS TO THE SUITABILITY, DESIGN, MERCHANTABILITY, OR FITNESS OF THE PRODUCT FOR CUSTOMERS APPLICATION. The drawing and information provided remain the property and copyright of the manufacturer listed. The manufacturer reserves the right to modify specification without notice.