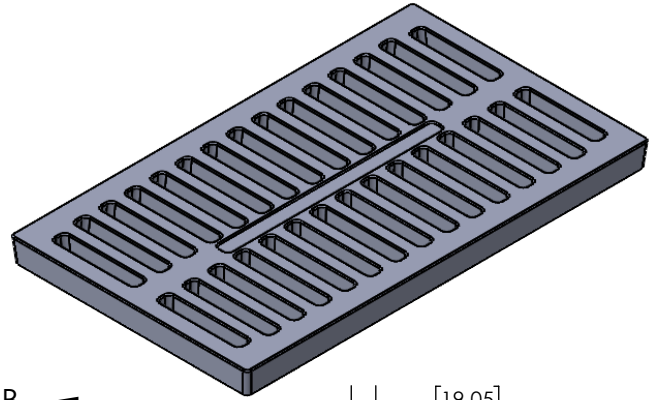
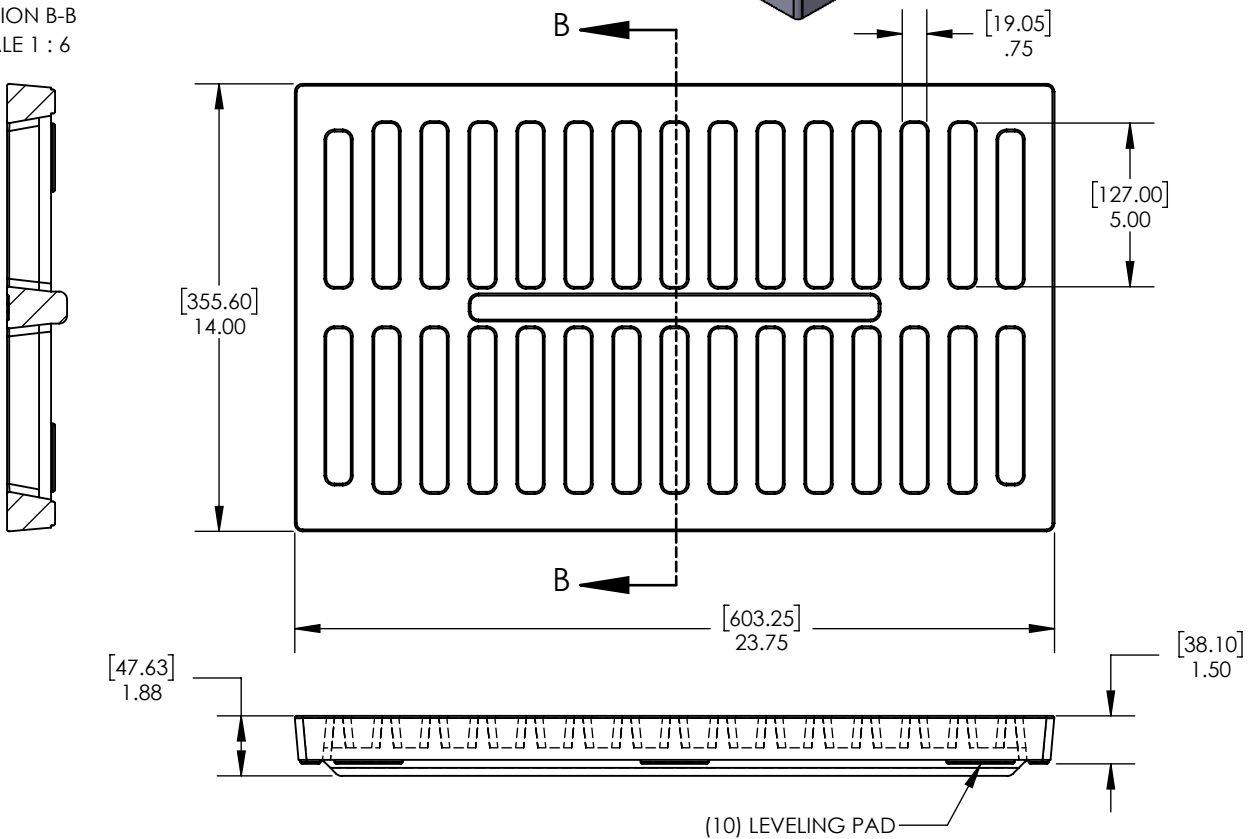


DL-J4223-01

GRATE 14" X 24" HEAVY DUTY GRAY IRON ASTM A48 CL35B



SECTION B-B
 SCALE 1 : 6



MANUFACTURER



DISCLAIMER - The customer and the customer's architects, engineers, consultants, and other professionals are completely responsible for the selection installation and maintenance of any product purchased from Trench Drain Systems and/or its manufacturers. TRENCH DRAIN SYSTEMS MAKES NO WARRANTY, EXPRESS OR IMPLIED, AS TO THE SUITABILITY, DESIGN, MERCHANTABILITY, OR FITNESS OF THE PRODUCT FOR CUSTOMERS APPLICATION. The drawing and information provided remain the property and copyright of the manufacturer listed. The manufacturer reserves the right to modify specification without notice.

ENGINEERING SPECIFICATION

D&L FOUNDRY DL-J4223-04 IS SUITABLE FOR MANY HEAVY DUTY APPLICATIONS. THE GRATE HAS 34% (115 IN²) OF OPEN AREA AND IS MADE FROM GRAY IRON THAT CONFORMS TO ASTM A48 CL35B. THE GRATE WEIGHS 64LBS. AND MEASURES 1.50" X 14.00" X 24.00". GRATE HAS (4) LEVELING PADS THAT CAN BE GROUND TO LEVEL GRATE. MADE IN THE USA