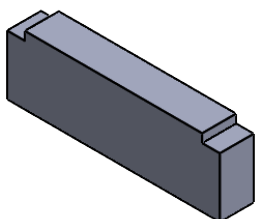


Released: 5.15.21
 Revision: A

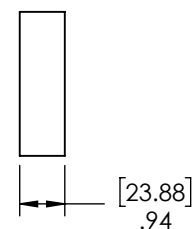
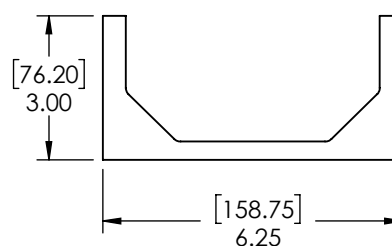
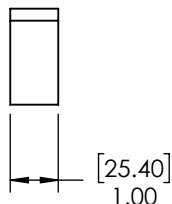
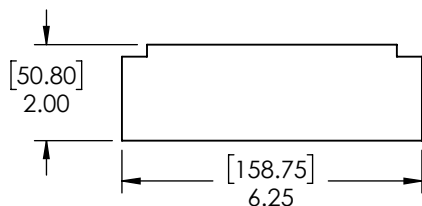
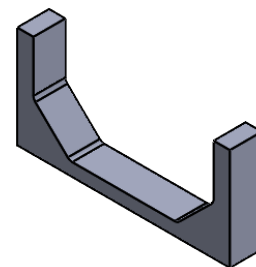
DP0699

POLYCAST 600 SERIES CHANNEL ADAPTORS

DP0699M



DP0699F



USE A DP0699F CHANNEL ADAPTOR TO CREATE HIGH POINTS IN THE MIDDLE OF A DRAIN RUN.



USE A DP0699M CHANNEL ADAPTOR TO JOIN TWO DRAIN RUN ENDS TOGETHER AT A LOW POINT.

MANUFACTURER

POLYCAST®

DISCLAIMER - The customer and the customer's architects, engineers, consultants, and other professionals are completely responsible for the selection installation and maintenance of any product purchased from Trench Drain Systems and/or its manufacturers. TRENCH DRAIN SYSTEMS MAKES NO WARRANTY, EXPRESS OR IMPLIED, AS TO THE SUITABILITY, DESIGN, MERCHANTABILITY, OR FITNESS OF THE PRODUCT FOR CUSTOMERS APPLICATION. The drawing and information provided remain the property and copyright of the manufacturer listed. The manufacturer reserves the right to modify specification without notice.

SPECIFICATION

MALE AND FEMALE TRANSITION DEVICES (DP0699F & DP0699M) ARE AVAILABLE WHERE CHANNEL RUNS ARE IN OPPOSITE DIRECTIONS AND TWO CHANNELS ARE SET EITHER FEMALE TO FEMALE OR MALE TO MALE. A FEMALE TRANSITION PIECE (DP0699F) IS USED TO FILL THE TOP SPACE OF THE FEMALE TO FEMALE JOINT (THIS APPLIES TO THE 600 SERIES ONLY). AN EPOXY GROUT OR URETHANE SEALER CAN BE USED TO SMOOTH OVER THE GAP ON THE INSIDE BOTTOM OF THE CHANNEL. A MALE TRANSITION PIECE (DP0699M) IS USED TO LAP UNDER THE MALE TO MALE JOINT.