



RELEASED: 5.15.21
REVISION: A

610-638-1221
sales@trenchdrain.com
PO BOX 377 - FREMONT, OH 43420

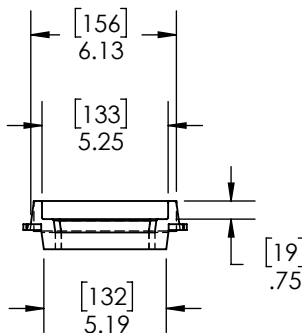
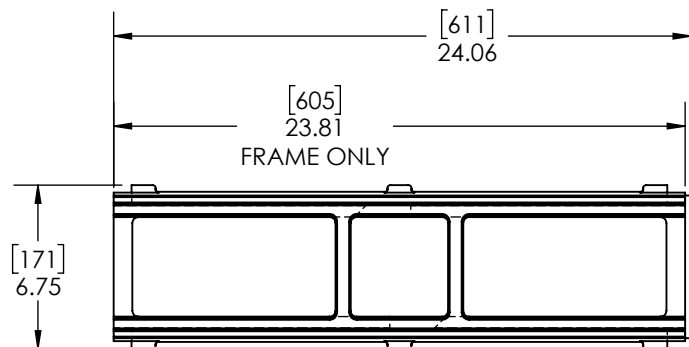
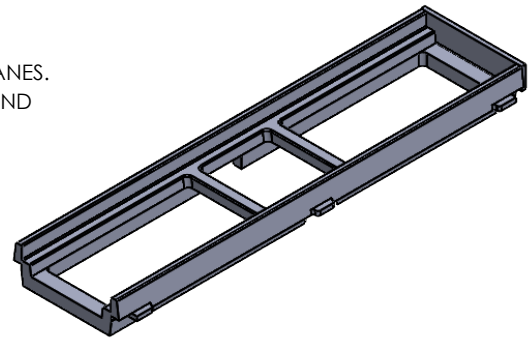
PROJECT ID: _____
CONTRACT NO: _____
LOCATION: _____

DG0700AC

POLYCAST 700 SERIES CAST IRON FRAME W/END CAP

MEETS THE FOLLOWING STANDARDS & SPECIFICATIONS:

- DIN 19580 / DIN EN 1433 DRAINAGE CHANNELS FOR VEHICULAR AND PEDESTRIAN AREAS.
- FEDERAL AVIATION ADMINISTRATION (FAA) ADVISORY CIRCULAR AC 150/5320-6E APPENDIX 3, DESIGN OF STRUCTURES FOR HEAVY AIRPLANES.
- AASHTO H-20 AND H-25 PER AASHTO M-306 DRAINAGE, SEWER, UTILITY AND RELATED CASTINGS



INTERGRAL GROOVE
FOR LOCKING DEVICE

MANUFACTURER

POLYCAST

DISCLAIMER - The customer and the customer's architects, engineers, consultants, and other professionals are completely responsible for the selection installation and maintenance of any product purchased from Trench Drain Systems and/or its manufacturers. TRENCH DRAIN SYSTEMS MAKES NO WARRANTY, EXPRESS OR IMPLIED, AS TO THE SUITABILITY, DESIGN, MERCHANTABILITY, OR FITNESS OF THE PRODUCT FOR CUSTOMERS APPLICATION. The drawing and information provided remain the property and copyright of the manufacturer listed. The manufacturer reserves the right to modify specification without notice.

ENGINEERING SPECIFICATION

POLYCAST HARDNOSE CHANNEL FRAME OFFERS EXCEPTIONAL IMPACT RESISTANCE. DESIGNED FOR EXTREME LOADS, THE HARDNOSE IRON FRAME STRENGTHENS THE GRATING AND DRAIN ASSEMBLY FOR EXTRA DURABILITY. FOR HEAVY COMMERCIAL, TAXIWAYS, HARD WHEEL FORKLIFTS ETC. THE FRAME IS MADE OF ASTM A48 GR. 30-B OR GR. 35-B CAST IRON W/ A BLACK FINISH AND WEIGHS 15LBS