

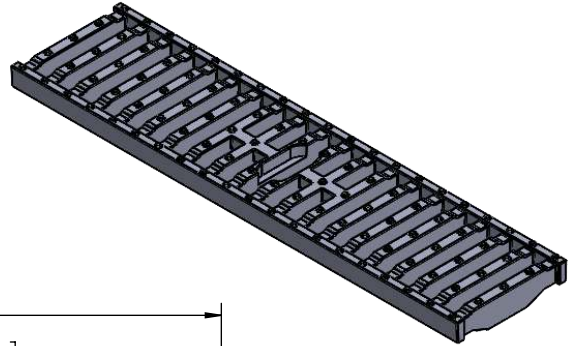
Released: 11.17.20
 Revision: -

462G	Formally B412005	DUCTILE IRON CLASS D SLOTTED GRATE
-------------	---------------------	---

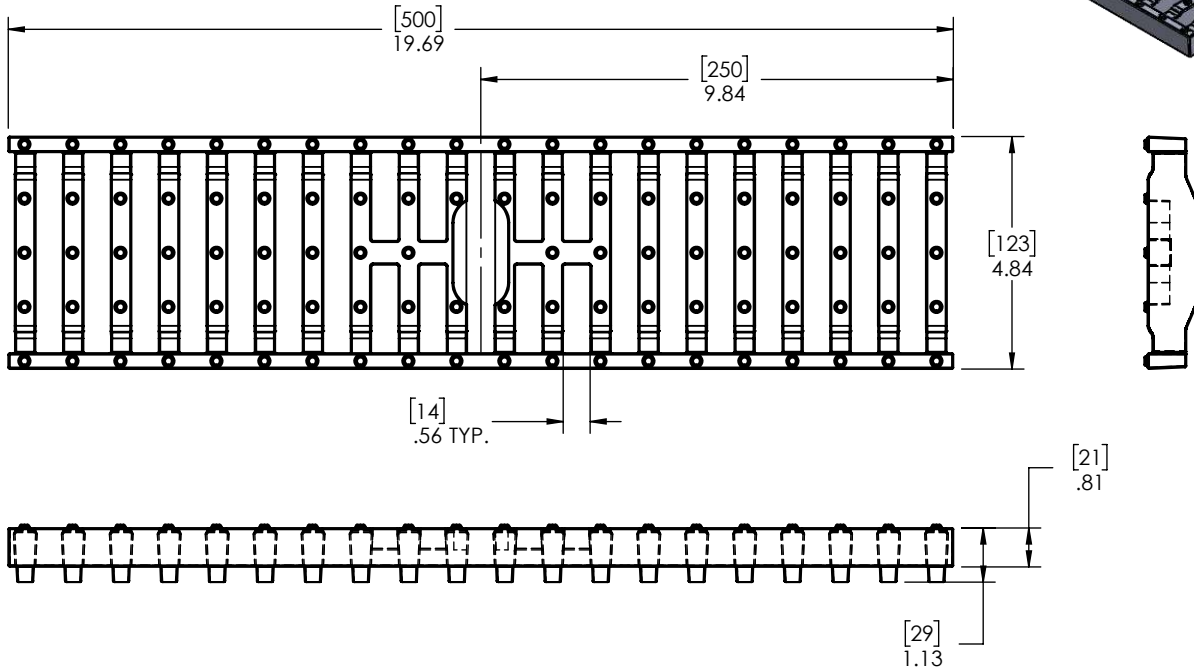
SYSTEM MFG	SYSTEM	LOCKING DEVICE
ULMA	U100, D100 & Hydroplus	LD100X-3
	M100	LD100MX-3
	AD100 & AK100	LD100X-6
ABT, Inc.	POLYDRAIN	2811B *
ACO DRAIN	K100 Series	811
MEARIN	100	141460
GATIC	M50	B31P020



APPLICATION LOAD CLASS D:
 Recommended for heavy-duty hard tire forklifts at speeds less than 20 m.p.h., H-20 rated



*DEPENDING ON SYSTEM LENGTH, THE LAST GRATE LENGTH MAY REQUIRE MODIFICATION TO FIT



MANUFACTURER



DISCLAIMER - The customer and the customer's architects, engineers, consultants, and other professionals are completely responsible for the selection installation and maintenance of any product purchased from Trench Drain Systems and/or its manufacturers. TRENCH DRAIN SYSTEMS MAKES NO WARRANTY, EXPRESS OR IMPLIED, AS TO THE SUITABILITY, DESIGN, MERCHANTABILITY, OR FITNESS OF THE PRODUCT FOR CUSTOMERS APPLICATION. The drawing and information provided remain the property and copyright of the manufacturer listed. The manufacturer reserves the right to modify specification without notice.

ENGINEERING SPECIFICATION

Ductile Iron grate designed for main road, highways and high traffic areas such as public car parks. ADA Compliant for accessible routes. Designed to be used on ULMA, Mearin, ABT, ACO or Gatic trench drain systems. Locking devices must be used to maintain load rating of grate. Grate meets Load Class D400