



Released: 5.26.23
 Revision: B

462G / B412005

DUCTILE IRON CLASS D SLOTTED GRATE

PART NO.	MATERIAL	WEIGHT	OPEN AREA	FLOW RATE
462G / B412005	DUCTILE IRON	10.30 LBS.	46%	91.30 GPM PER LINEAR FOOT WITH 1/2" OF HEAD

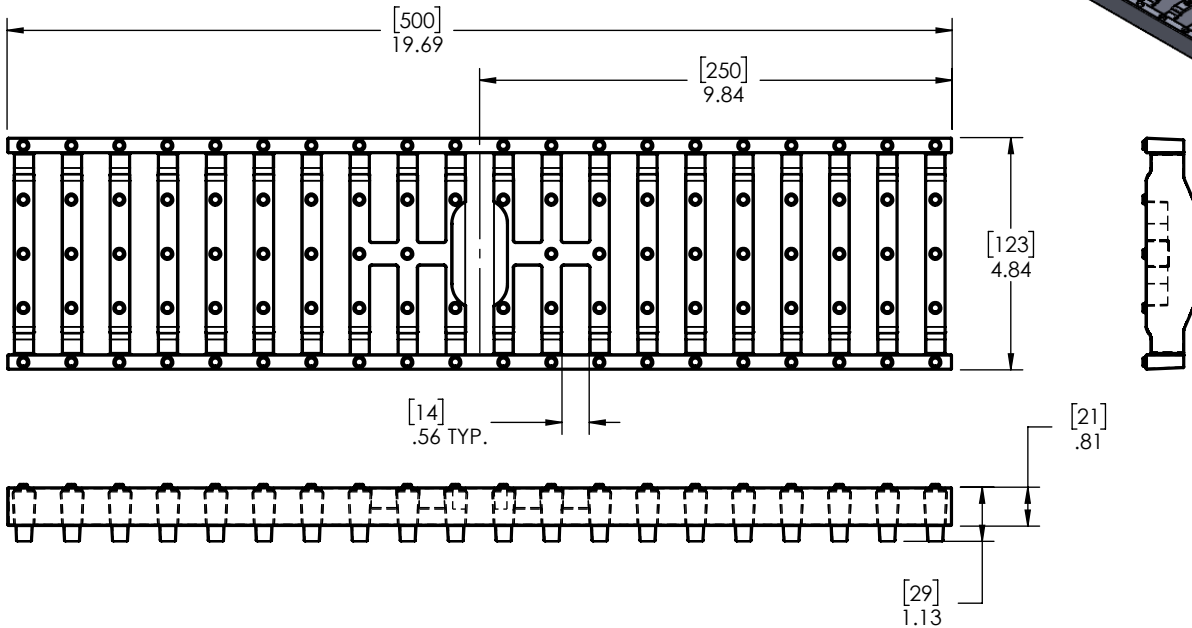
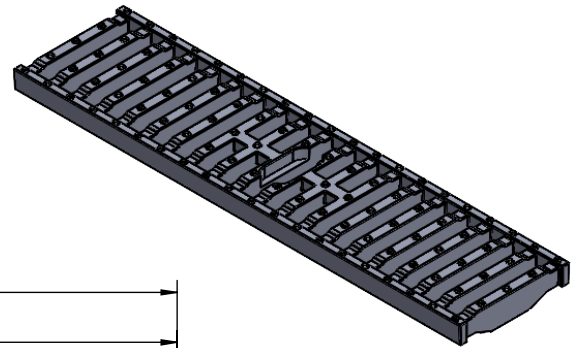
APPLICATION LOAD CLASS C:
 CURB SIDES, HIGHWAY SHOULDERS AND PARKING AREAS. DESIGNED FOR A DISTRIBUTED PRESSURE OF 56,200 LBS. (250KN)

MEETS THE FOLLOWING STANDARDS AND SPECIFICATIONS:
 -THE AMERICANS WITH DISABILITIES ACT OF 1990: 4.5.4.

SYSTEM MFG	SYSTEM	LOCKING DEVICE
ULMA	U100, D100 & Hydroplus	LD100X-3
	M100	LD100MX-3
	AD100 & AK100	LD100X-3CB
ABT, Inc.	POLYDRAIN	2811B
ACO DRAIN	K100 Series	811
MEARIN	100	141460
GATIC	M50	B31P020

*DEPENDING ON SYSTEM LENGTH, THE LAST GRATE LENGTH MAY REQUIRE MODIFICATION TO FIT



MANUFACTURER



DISCLAIMER - The customer and the customer's architects, engineers, consultants, and other professionals are completely responsible for the selection installation and maintenance of any product purchased from Trench Drain Systems and/or its manufacturers. TRENCH DRAIN SYSTEMS MAKES NO WARRANTY, EXPRESS OR IMPLIED, AS TO THE SUITABILITY, DESIGN, MERCHANTABILITY, OR FITNESS OF THE PRODUCT FOR CUSTOMERS APPLICATION. The drawing and information provided remain the property and copyright of the manufacturer listed. The manufacturer reserves the right to modify specification without notice.

ENGINEERING SPECIFICATION

Ductile Iron grate designed for curb sides, highway shoulders and parking areas. ADA Compliant for accessible routes. Designed to be used on ULMA, Mearin, ABT, ACO or Gatic trench drain systems. Locking devices must be used to maintain load rating of grate. Grate meets Load Class C.