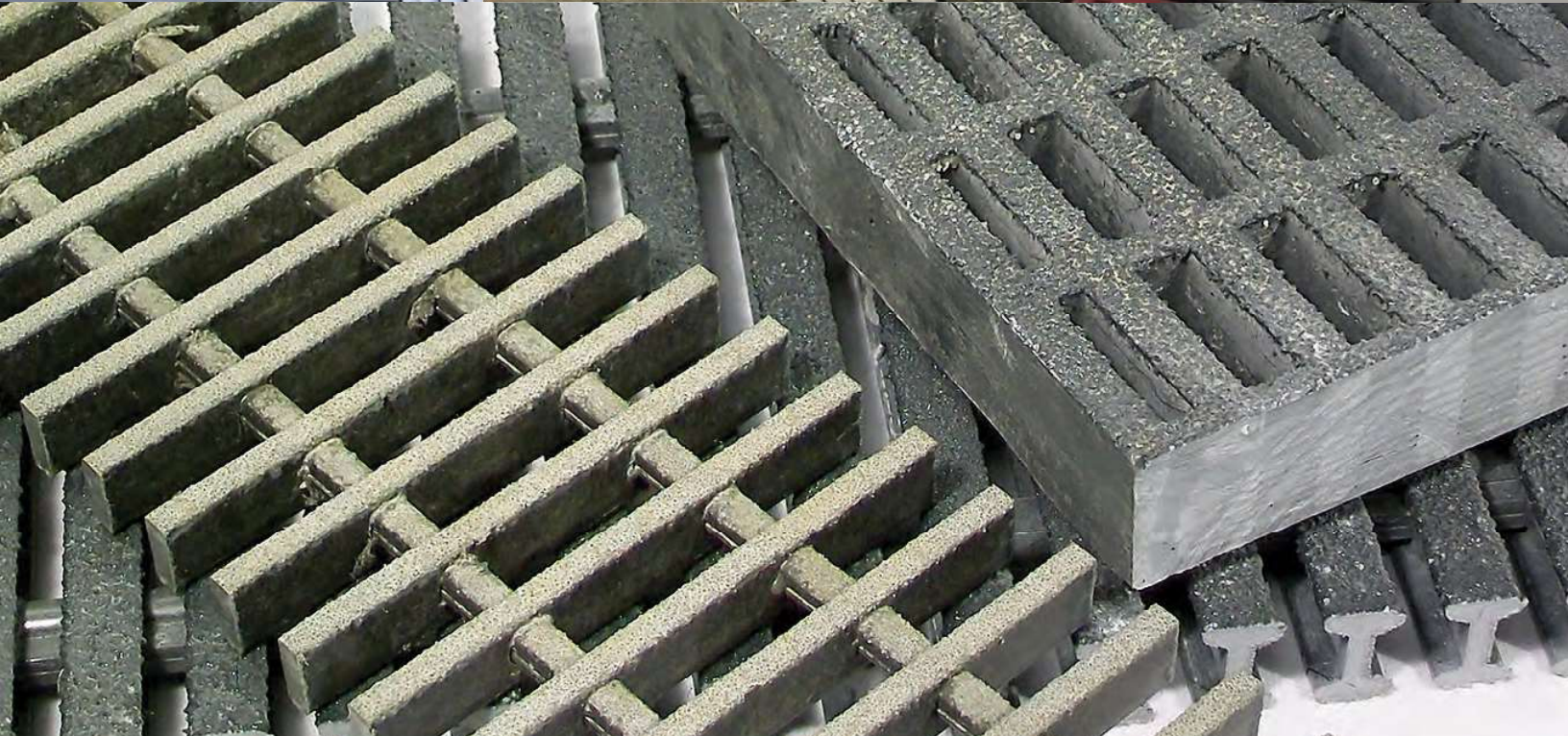
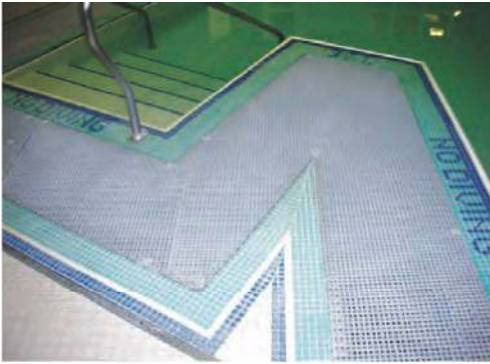


Fiberglass Reinforced Plastic (FRP) Grate



Fiberglass Reinforced Plastic (FRP) Grates



Molded Fiberglass

Fiberglass is molded into large sheets for later fabrication into smaller, custom shapes. Mesh grating is made by laying fiber reinforcing materials in a grid shaped mold and bonding them with polyester or vinyl ester resins. Other resins are available for special applications. The molded product is ground to the desired thickness and flatness.

Micro-Mesh

Openings: 0.75"
Depth: 1" - 1.5"
Open Area: 44%



Square Mesh

Openings: 1" - 2"
Depth: 0.5" - 2"
Open Area: 58% - 76%



High Load Capacity (HLC)

Openings: 1" x 2"
Depth: 1.5" - 2"
Open Area: 48%



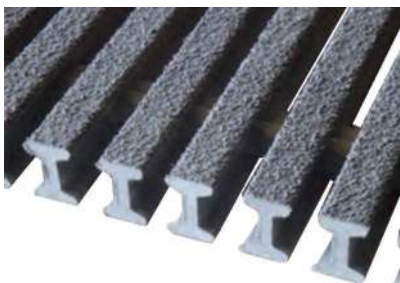
Pultruded Fiberglass

Fiberglass can be pultruded by fibers being pulled through an extrusion die while vinyl ester polymer resins are extruded under pressure. Pultrusion allows for long, continuous grates of cross-sectioned bars, tees and I's. These long bars are assembled parallel and connected by structural cross bars on 6 inch spacing. This design provides unidirectional strength. Surface options include meniscus, non-slip grit, non conductive grit, and smooth.



I-Bar

Openings: 0.4" - 0.9"
Depth: 1" - 1.5"
Open Area: 40% - 60%



T-Bar

Openings: 0.2" - 1"
Depth: 1" - 2"
Open Area: 12% - 50%



High Strength I-Bar

Openings: 0.3" - 0.8"
Depth: 1" - 3"
Open Area: 37% - 58%



Fiberglass Reinforced Plastic (FRP) Grate

Accessories

Y-Embedded Frame



Available in 1", 1.5" and 2" setting surfaces, the Y-embed frame has the tried and true, traditional anchoring system that uses the "Y" shape to lock the frames into your concrete pour.

EZ Frame



Available in 1", 1.5" and 2" setting surfaces, EZ Frame has a set of low profile anchors built in to help lock it securely into concrete during frame installation.

Hold-Down Clips



Stainless steel clips are available to lock down fiberglass grating. Type R and Type E are made for I-Bar and T-Bar pultruded grating and Type M are for standard mesh grating. Spring clips are available for grate removal and reinstallation without the use of hand tools.

Trench Drain Systems



FP1200



SS600



ULMA U100KX

Fiberglass Reinforced Plastic is a strong, lightweight material useful as trench drain grating. Whether large openings are needed for fast drainage, or tight grate openings for ADA surfaces, Trench Drain Systems offers custom fiberglass grates and a large selection of trench drain channels for your drainage application.

Fiberglass Grate Markets

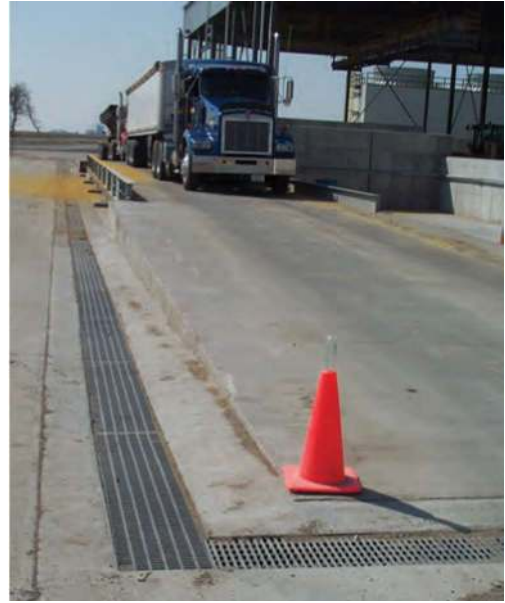


- Architectural
- Bridge & Highway
- Chemical
- Commercial
- Food and Beverage
- Manufacturing
- Metals and Mining
- Microelectronics
- Oil and Gas
- Pharmaceutical
- Power
- Pulp and Paper
- Recreation
- Telecommunications
- Transportation
- Water & Wastewater

Fiberglass Grating Features

Typical Applications

- Food Processing / Dairies
- Chemical Plants
- Water Treatment Facilities
- Pharmaceuticals
- Drilling Platforms
- Catch Basin Seats
- Electrical Sites
- Underwater Structures
- Pool and Spa Decks
- Patio Decks
- Playgrounds
- Work Platforms
- Courtyards
- Plazas
- Resorts
- Stairways
- Car Washes
- Memorials
- Catwalks
- Walkways
- Kennels
- Aquariums
- Marina Docks
- Storage Areas



Features

- Long Service Life
- Low Install Cost
- Resists Warping in High Heat
- Corrosion and UV Resistance
- Sleek Appearance
- Retains Color
- Non-Slip Surfaces
- Custom Sized
- ADA Compliant/Heelproof Options
- Electrically Non Conductive
- Low Thermal Conductivity
- Lightweight
- High Strength to Weight Ratio
- Impact Resistant
- Fire Retardant
- Low Maintenance



PO Box 377 • Fremont, Ohio 43420 USA • Phone (610) 638-1221 • sales@trenchdrain.com • TrenchDrain.com

TDS-868

Copyright © 2020 Trench Drain Systems

