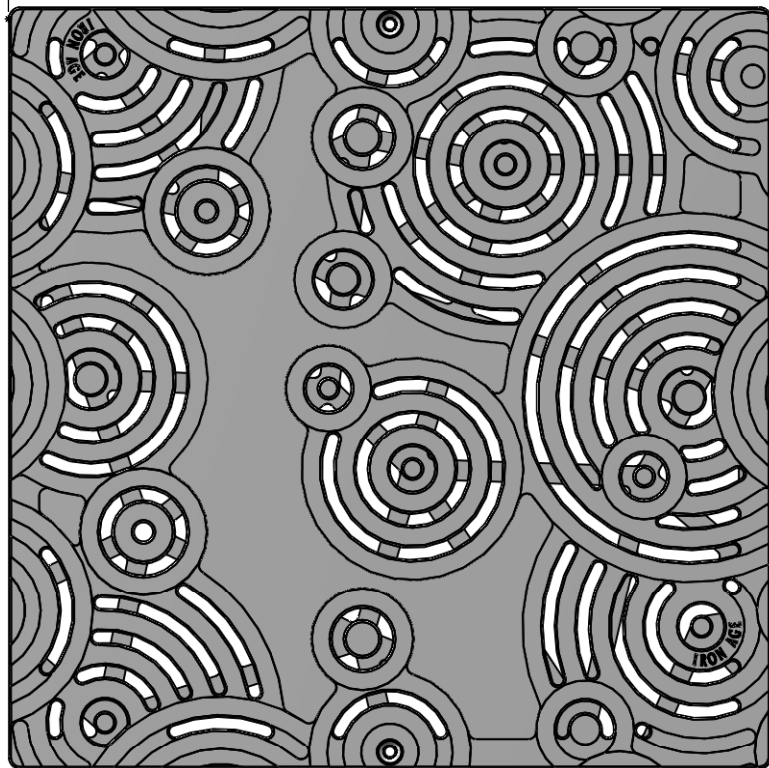
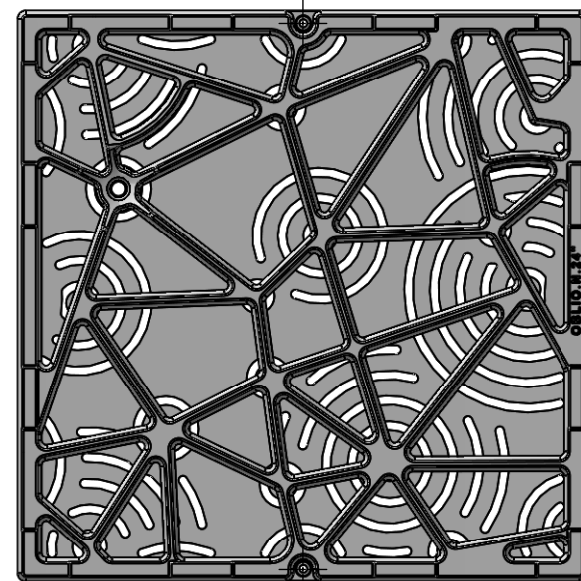


23.809" sq

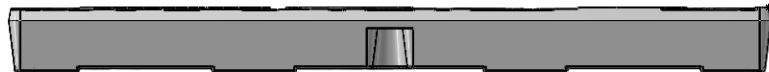


TOP
scale 1:6



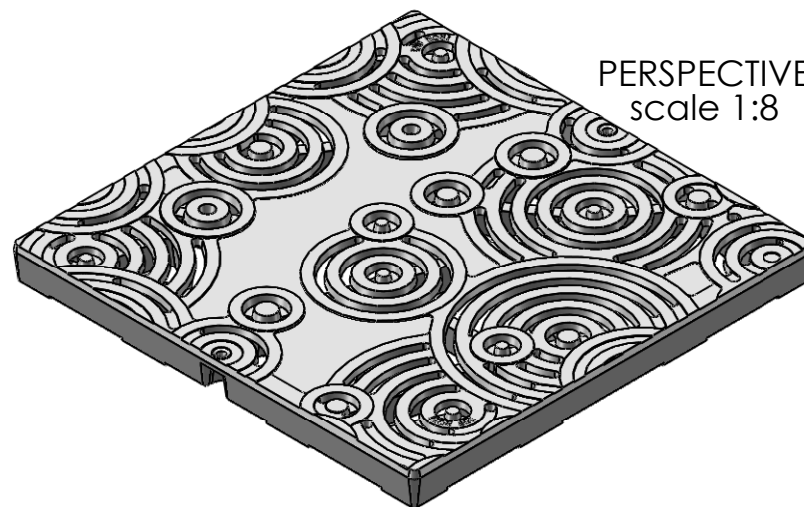
BACK
scale 1:8

2" thick



EDGE
scale 1:6

PERSPECTIVE
scale 1:8



NOTES:

1. Material: cast iron
2. Natural finish
3. One piece, total thickness: 2"
4. Fits 2400 catch basin manufactured by NDS™
5. A.D.A. compliant, openings less than 1/2"
6. Due to casting inconsistencies all dimensions are nominal

 **IRON AGE** 2104 SW 152nd st #4 TEL 206.276.0925
DESIGNS Burién, WA 98166 FAX 206.257.0318
 www.ironagedrains.com

Oblio 24" sq. drain grate Drawn by: CD
 Date: 1/23/09
 DWG. NO. OBL.N.24x24 Scale: NTS

patent pending © 2009 Iron Age Designs