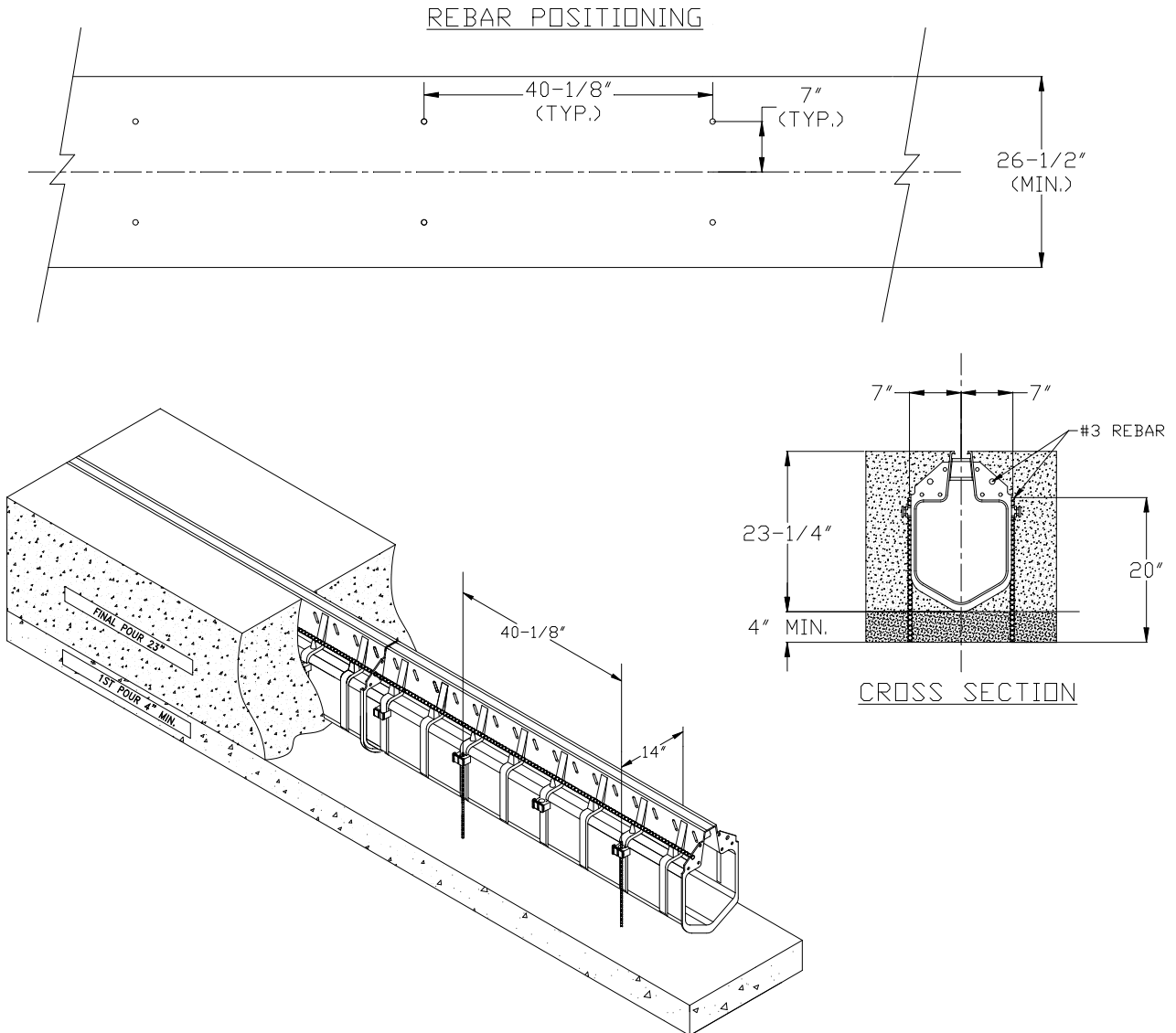




Z888-18 SPECIAL INSTALLATION



Special Installation: A minimum concrete base of 2000psi, minimum depth of 4", and width of 26.5" must be cast with two #4(1/2") re-bar spaced on 40-1/8" intervals along the channels flow direction and 7" on either side of the centerline of the channel. Set the initial pour to final grade minus 23-1/4". Install the channels onto the re-bar starting at the outlet, working to the beginning of the run (upstream). Using the pre-formed re-bar clips on the Hi-Cap slotted drainage system to hold the channel into position and attach the supplied re-bar clip fastening hardware to lock the system and keep it from floating during the final concrete pour.

⚠WARNING: Cancer and Reproductive Harm - www.P65Warnings.ca.gov
⚠ADVERTENCIA: Cáncer y daño reproductivo - www.P65Warnings.ca.gov
⚠AVERTISSEMENT: Cancer et effets néfastes sur la reproduction - www.P65Warnings.ca.gov

Zurn Industries, LLC | Specification Drainage Operation
1801 Pittsburgh Avenue, Erie, PA U.S.A. 16502 · Ph. 855-663-9876, Fax 814-454-7929
In Canada | Zurn Industries Limited
3544 Nashua Drive, Mississauga, Ontario L4V 1L2 · Ph. 905-405-8272, Fax 905-405-1292
www.zurn.com

Rev. B
Date: 6/4/2018
C.N. No. 140093
Form No. FT678