

Bare Feet

Many perforated, slotted and decorative drain covers are safe for bare feet. ADA and heelproof selections are available.

Heat

Intense sunlight can cause grates to warp. Consider a grate that does not hold in excessive heat.

Weight

What kind of traffic will your grates see? Keep in mind that lawn chairs and patio table legs can poke through some grates.

Size

Large pool decks demand a drain that can handle more spill water than a 1" strip drain.

Flow

Be sure the drain has the proper slope to move the water. Pre-sloped and neutral options are available.

Corners

Map out your pool area to see if you need a trench drain channel that offers corners and t-sections.

Grate Upgrades

If you want to be economical now but keep your options open, look for a deck drain with lots of grate options.

Cleaning

Consider selecting grates that are removable for easy access to clean channels periodically.

Explore the extensive line of trench drain channels, grates and catch basins for projects of any size at our online store today.



Not sure which drain or grate is right for you? Contact our experts for a free consultation, fast quote and competitive pricing.



PO Box 377 Fremont, Ohio 43420
610-638-1221 • TrenchDrain.com



TDS-200 R-7/2023

Decks • Patios Pools • Spas

Drainage Considerations



Why install a drain?

Trench drains are used to evacuate surface water or pool overflow. U-shaped channels are installed in concrete and covered with grating, which lays flush with the floor.

Do drains come with built-in slope?

Narrow drains (2" - 4") are not pre-pitched. Larger, 5" or 6" wide deck drains, can come with or without a pitch.

Can I install a drain using pavers?

The MAX Mini™ and systems by ULMA are ideal for decorative drainage with a paver patio.

Are point drain grates available to match channel grate designs?

4" point drain grates are available to match the NDS® Mini Channel grates and the MAX Mini™ drainage system.



Can drains be customized?

Many deck drains are made with special considerations in mind:

- 90 degree corners
- T-sections
- Cross fabrications
- Bottom outlets

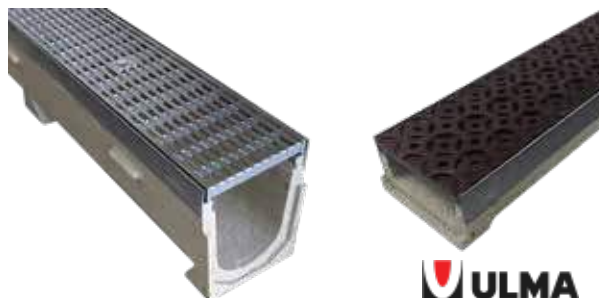
Our engineers can provide a free design layout for your project.



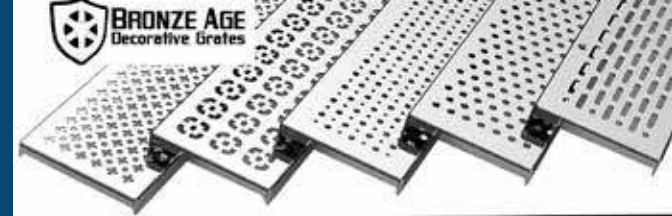
What about drain channel edging?

Channel edging adds a sophisticated look to pools and patios and is available with the ULMA and MAX Mini™ drainage systems.

Polymer concrete ULMA channels are available with or without stainless steel edging and numerous grate options.



ULMA



NDS & Iron Age Grates



What types of grates are available?

Grates can stand out as a high end finish or blend in with the scenery. Along with many design options, grates are available in various materials:

- Plastic
- Bronze
- Cast Iron
- Aluminum
- Brass
- Stainless Steel (also Marine Grade)



Our exclusive MAX Mini™ drain systems are durable and lightweight polyolefin sections, preassembled with decorative edging. A variety of decorative grates add to the overall design, perfect for a pool or patio accent.