

# FTAS 65 Series



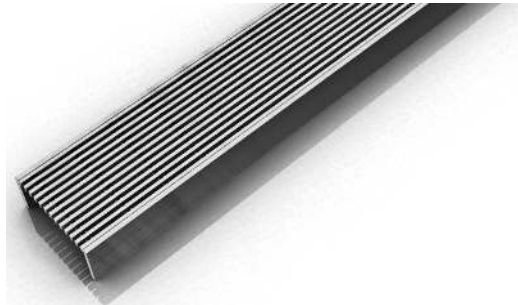
## FTAS 65 | Fixed Length

- 12 gauge 316 Stainless Steel grate
- 16 gauge 304 Stainless Steel channel
- Pre-pitched channel with "Fixed" lengths and "Fixed" center side "tunnel" outlet location
- Not site sizeable
- Indoor or outdoor use
- Bonded "Flange" installation for flush against the wall
- Allows waste line to connect horizontally to save floor height and waste line relocation
- Lowest height for curbless installations
- Uses Liquid and Fabric Sheet Membrane waterproofing
- Grate can be removed completely for cleaning
- Flow rate 9 GPM per outlet\*

*\*Flow rate measured at outlet only. Measurement does not account for water in channel or sheeting on shower floor.*

### Finishes:

- \_\_\_ Satin Stainless
- \_\_\_ Polished Stainless
- \_\_\_ Matte White
- \_\_\_ Matte Black



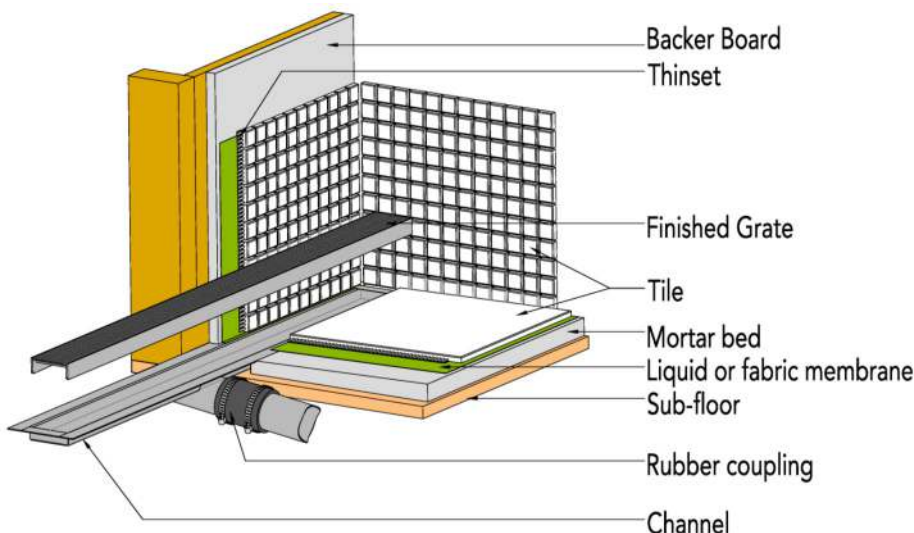
### Complete Kits:

|           |                  |
|-----------|------------------|
| FTAS 6524 | 24" Complete Kit |
| FTAS 6532 | 32" Complete Kit |
| FTAS 6536 | 36" Complete Kit |
| FTAS 6542 | 42" Complete Kit |
| FTAS 6548 | 48" Complete Kit |
| FTAS 6560 | 60" Complete Kit |

### Components:

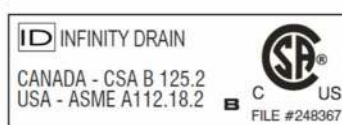
|         |                           |
|---------|---------------------------|
| SA 6524 | 24" Stainless Steel Grate |
| SA 6532 | 32" Stainless Steel Grate |
| SA 6536 | 36" Stainless Steel Grate |
| SA 6542 | 42" Stainless Steel Grate |
| SA 6548 | 48" Stainless Steel Grate |
| SA 6560 | 60" Stainless Steel Grate |
| OC 6532 | 32" Fixed Flange Channel  |
| OC 6536 | 36" Fixed Flange Channel  |
| OC 6542 | 42" Fixed Flange Channel  |
| OC 6548 | 48" Fixed Flange Channel  |
| OC 6560 | 60" Fixed Flange Channel  |

## Installation (FT) Flange Tunnel



### Infinity Drain

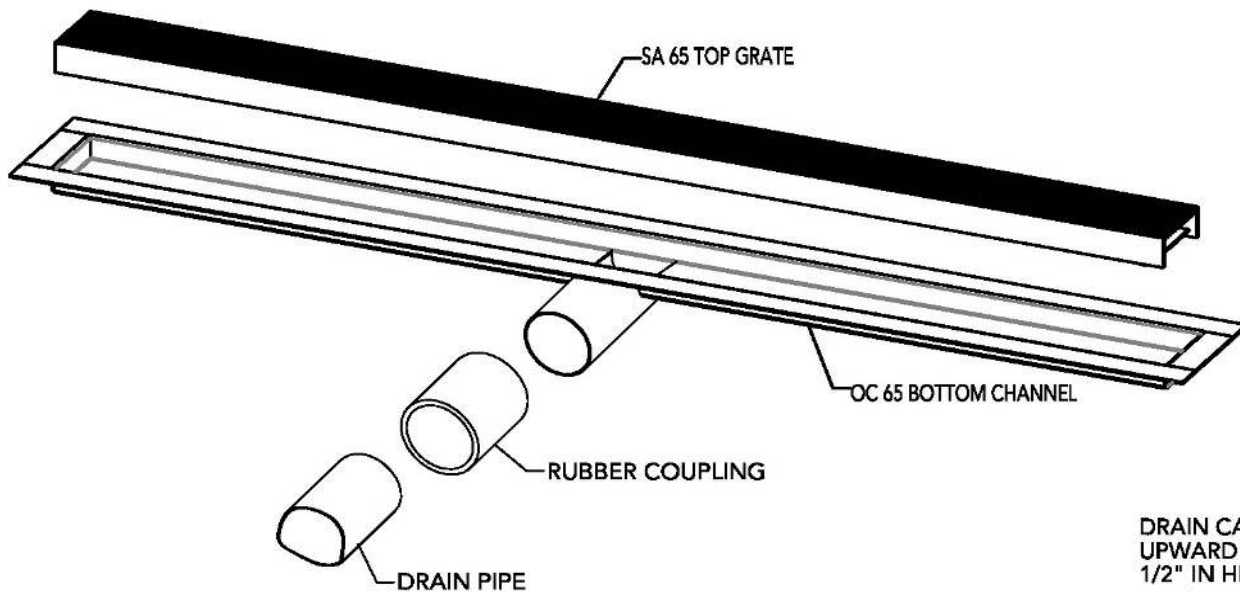
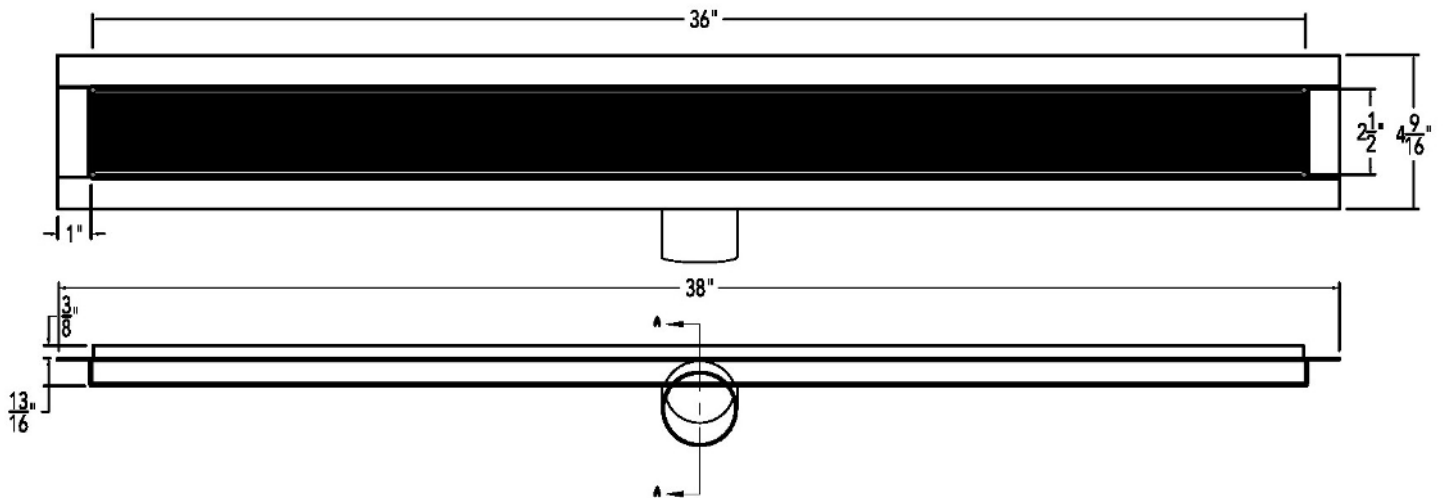
18 Secatoag Avenue  
Port Washington, NY 11050  
Phone: 516.767.6786  
Fax: 516.740.3066  
www.InfinityDrain.com



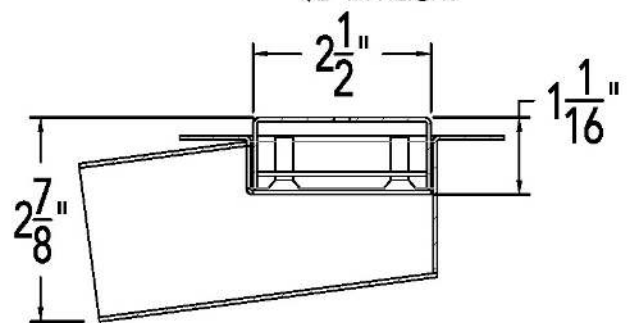
**Note:** Installer must verify all rough-in dimensions prior to installation and consult local and national codes. Conformity and compliance to local and national codes are the responsibility of the installer.

# FTAS 6536 Specifications

**ID** Infinity Drain



DRAIN CAN BE ADJUSTED UPWARD FOR AN ADDITIONAL 1/2" IN HEIGHT



SECTION A-A

## FTAS 6536

### 36" Complete Kit Includes:

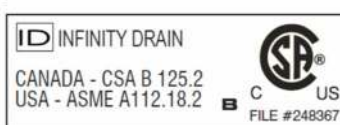
(38 1/8" l x 4 1/2" w x 1 3/16" h)

1 - SA 6536 Grate

1 - OC 6536 Fixed Flange Channel

## Infinity Drain

18 Secatoag Avenue  
Port Washington, NY 11050  
Phone: 516.767.6786  
Fax: 516.740.3066  
www.InfinityDrain.com



**Note:** Installer must verify all rough-in dimensions prior to installation and consult local and national codes. Conformity and compliance to local and national codes are the responsibility of the installer.