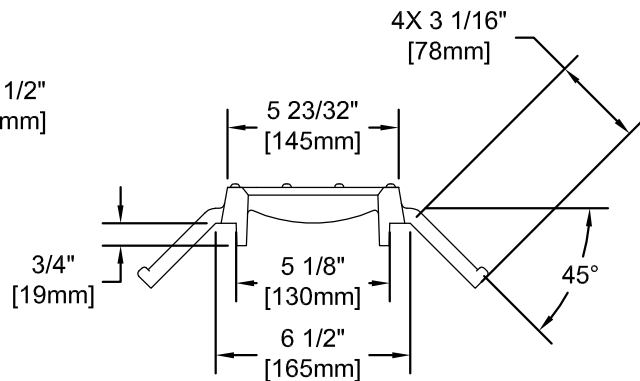
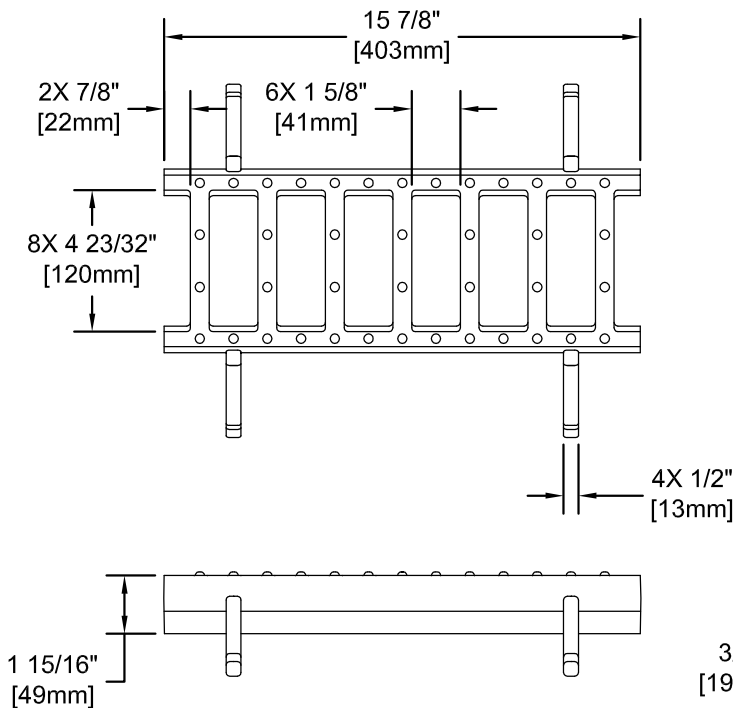
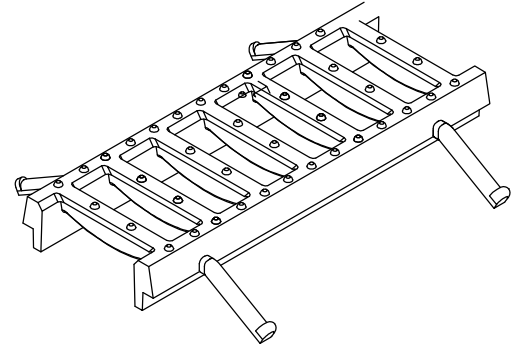


### ENGINEERING SPECIFICATION:

POLYCAST<sup>®</sup> Heavy Duty Ductile Iron Grate & Frame designed to support dynamic high speed wheel loads in excess of AASHTO H-20. The grate is one-piece and non-removable. The grate has 60% (54in<sup>2</sup>) of open area. The grate is made of ASTM A536 GR. 65-45-12 (ductile iron) and weighs approximately 15lbs [6.80kg]. The grate is only available in a 16" [406mm] length.



### APPLICATION LOAD CLASS F:

Interstate highway traffic rated. High speed vehicles (roadway and runway applications). Designed for a distributed load of 900 psi (130,000psf).

### MEETS THE FOLLOWING STANDARDS & SPECIFICATIONS:

- Federal Aviation Administration (FAA) Advisory Circular Airport Pavement Design and Evaluation (AC 150/5320-6D Appendix 3 Design of Structures for Heavy Aircraft)
- AASHTO Highway Drainage Guidelines
- AASHTO Standard Specification for Highway Bridges
- ASTM Standard B117, Standard Practice for Operating Salt Spray (Fog) Apparatus
- Exceeds 686lbs/ft [10kN/m] pullout per Caltrans Specifications