

# POLYCAST<sup>®</sup>

## 500 Series

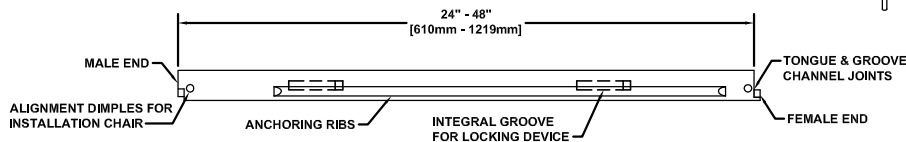
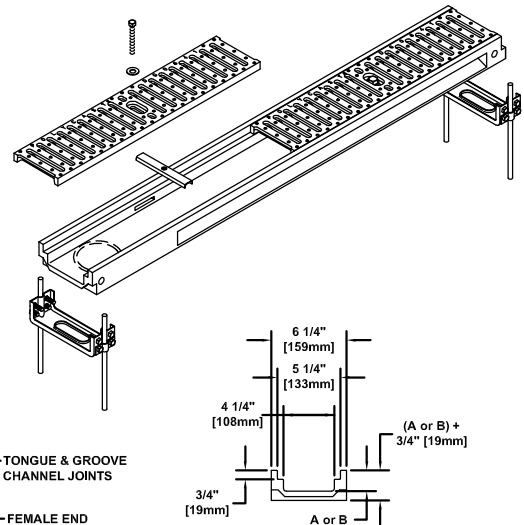
### Non-Sloped Trench Drain System

PROJECT ID/\_\_\_\_\_  
CONTRACT NO: \_\_\_\_\_

LOCATION: \_\_\_\_\_

#### ENGINEERING SPECIFICATION:

POLYCAST<sup>®</sup> 500 Series Non-Sloped Trench Drain System is a non-sloping trench drain, with 6 1/4" [159mm] wide x a nominal 48" [1219mm] long (standard) polyester polymer concrete channels with tongue and groove connections. Channel will be supplied with drill outs for a 4" [102mm] bottom outlet. Grating locking devices, installation chairs and end caps with a 4" [102mm] drain drill out as required. Installation chairs are recommended for installation of drainage channels.



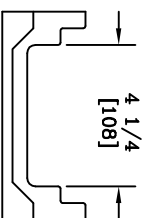
Channel Number	Weight (LBS.)	Inlet Dim 'A'	Outlet Dim 'B'
<input type="checkbox"/> 500 w/ 4" Bottom Drill Out (Non-Sloped)	25	1-3/4	1-3/4
<input type="checkbox"/> 500H w/ 4" Bottom Drill Out (Non-Sloped 24")	12	1-3/4	1-3/4

Grate Options (Select One)		
Grate Type	Part No.	Load Class
<input type="checkbox"/> Galvanized Steel Solid (ADA Compliant)	DG0645	Class A
<input type="checkbox"/> Galvanized Steel Perforated (ADA Compliant)	DG0646	Class A
<input type="checkbox"/> Stainless Steel Perforated (ADA Compliant)	DG0657	Class A
<input type="checkbox"/> Stainless Steel Solid (ADA Compliant)	DG0667	Class A
<input type="checkbox"/> Galvanized Steel Slotted	DG0640	Class B
<input type="checkbox"/> Plastic Coated Galvanized Sheet	DG0640C	Class B
<input type="checkbox"/> Stainless Steel Slotted	DG0647	Class B
<input type="checkbox"/> DURAGUARD <sup>®</sup> Slotted	DG0670	Class B
<input type="checkbox"/> DURAGUARD <sup>®</sup> Transverse (ADA Compliant)	DG0675	Class B
<input type="checkbox"/> Fiberglass (5/8" Spacing)	DG0644	Class C
<input type="checkbox"/> Fiberglass (3/8" Spacing)	DG0644SP	Class C
<input type="checkbox"/> Iron Slotted	DG0641	Class D
<input type="checkbox"/> Ductile Iron Slotted	DG0641D	Class D
<input type="checkbox"/> Ductile Iron Solid (ADA Compliant)	DG0641S	Class D
<input type="checkbox"/> Ductile Iron Longitudinal Slotted (ADA Compliant)	DG0675HD	Class D
<input type="checkbox"/> DURAGUARD <sup>®</sup> Composite Frame w/Iron Slotted	DG0700PE w/DG0641	Class D
<input type="checkbox"/> DURAGUARD <sup>®</sup> Composite Frame w/Ductile Iron Solid	DG0700PE w/DG0641S	Class E
<input type="checkbox"/> DURAGUARD <sup>®</sup> Composite Frame w/Ductile Iron Slotted	DG0700PE w/DG0641D	Class E
<input type="checkbox"/> DURAGUARD <sup>®</sup> Composite Frame w/Ductile Iron Longitudinal Slotted	DG0700PE w/DG0675HD	Class E
<input type="checkbox"/> HARDNOSE Iron Frame w/Iron Slotted	DG0700AA w/DG0641	Class E
<input type="checkbox"/> HARDNOSE Iron Frame w/Ductile Iron Solid	DG0700AA w/DG0641S	Class F
<input type="checkbox"/> HARDNOSE Iron Frame w/Ductile Iron Slotted	DG0700AA w/DG0641D	Class F
<input type="checkbox"/> HARDNOSE Iron Frame w/Ductile Iron Longitudinal Slotted	DG0700AA w/DG0675HD	Class F


Options (Select All That Apply)	Part No.	Additional Specifications:
<input type="checkbox"/> Vinyl Ester Concrete Channels	DV0500	
<input type="checkbox"/> Closed End Cap (Inlet/Outlet)	DP0500C	
<input type="checkbox"/> Galvanized Steel POLYGUARD	DA0620A	
<input type="checkbox"/> Stainless Steel POLYGUARD	DA0620B	
<input type="checkbox"/> Installation Alignment Chair	DA0633	
<input type="checkbox"/> Locking Device For Galvanized & DURAGUARD <sup>®</sup> Grates	DA0642	
<input type="checkbox"/> Locking Device For Iron & Ductile Iron Grates	DA0642B	
<input type="checkbox"/> Locking Device For Fiberglass Grates	DA0642F	
<input type="checkbox"/> Locking Device For Stainless Steel Grates	DA0642S	

#### Meets the following Standards & Specifications:

- Federal Aviation Administration (FAA) Advisory Circular Airport Pavement Design and Evaluation (AC 150/5320-6D Appendix 3 Design of Structures for Heavy Aircraft)
- ASTM Standard D543, Test Method for Resistance of Plastics to Chemical Reagents
- ASTM Standard D570, Test Method for Water Absorption of Plastic
- ASTM Standard D576, Practice for Determination of Weight and Shape Change of Plastics Under Accelerated Service Conditions
- ASTM Standard G53, Recommended Practice for Operating Light and Water Exposure Apparatus for Exposure of Non-Metallic Materials
- ASTM Standard C78, Test Method for Flexural Strength of Concrete
- ASTM Standard C579, Test Method for Compressive Strength of Chemical Resistant Mortars and Monolithic Surfacing's
- AASHTO Highway Drainage Guidelines
- AASHTO Standard Specification for Highway Bridges



**ALL DIMENSIONS ARE IN INCHES UNLESS OTHERWISE SPECIFIED**

ALL DIMENSIONS ARE IN INCHES UNLESS OTHERWISE SPECIFIED									
BY	DATE	WEIGHT	 3621 INDUSTRIAL PARK DR LENOR CITY, TN 37771 865 986-9726	LOC					
DSN	3/23/92	2#4		HO					
DSN	3/23/92	7/24/92	14						
CHK	11/8/92	10/2/92	S						
ENG	3/23/92	10/2/92	REV						
APR	3/11/92	10/2/92	C						
APR			10/98						
JOB NUMBER			DRAWING NUMBER						
92304			SHEET 1 OF 1 DTP0600						