



MEARIN 100 Complete

Clear Width: 4" interior

Total Width: 5.3"

Material: Fiberglass

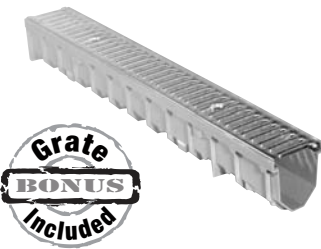
Grating: Galvanized Slotted grating cover included

Fall Options: Available without fall

Locking System: Top Fix Snap locking mechanism

Outlet: Channel contains bottom outlet recess in every section

Load Class: A, B, C



Complete Drainage Channels with Galvanized Slotted Grating

Product Description	Dimension l x h [in]	Product #	lbs/unit
Mearin 100	39.4 x 4.9	141621	10.5
Mearin 50	19.7 x 4.9	141626	5.4

Accessories for MEARIN 100 TopFix drainage channels

Silt Box



Material: Fiberglass w/grating

Product Description	Dimension l x h [in]	Product #	lbs/unit
silt box	19.7 x 15.5	141631	17.4

Corner Unit



Bend: 90 degrees

Grating: Without Grating Cover

Product Description	Dimension l x w [in]	Product #	lbs/unit
corner unit	20.0 x 24.8	143050	6.6

Optional pre-fabricated corner section reduces field modifications.

Inline Trap Set



Outlet Connector: 4.33 inches Ø

With 2 solid end caps

Product Description	Product #	lbs/unit
outlet connector Ø 4.3"	141400	0.7

End Caps



Material: Polypropylene

Product Description	Cross-Section Ø [in]	Product #	lbs/unit
end cap	3.0	141350	3.0

Bracket



Material: PVC

Product Description	Product #	lbs/unit
channel support bracket	141100	2.0

Note

TOP FIX is a bolt-less locking mechanism on the galvanized steel slotted grate for the Mearin 100 channel.

Applications

Parking lots, public areas

- Choose from 20 different grate options
- Select them according to weight load or appearance requirements

Swimming pools, recreational areas

- PVC slotted or stainless steel perforated grates offer aesthetically pleasing surface
- Factory fabricated corner sections using full length grate eliminates field modifications



MEARIN 100

Total Width: 5.3"

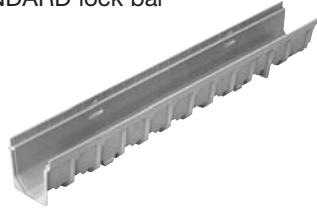
Clear Width: 4" interior

Material: Fiberglass

Fall Options: Available without fall

Locking System: STANDARD lock bar

Load Class: A, B, C



Product Description	Dimension l x h [in]	Product #	lbs/unit
Mearin 100	39.4 x 4.9	141105	5.0
Mearin 50	19.7 x 4.9	141055	2.8

MEARIN 100 Grating Options

	Product Description	Dimension [inches]	Product #	lbs/unit	
	grey plastic slotted grating*	19.7 x 4.8	141709	1.8	
	beige plastic slotted grating*	19.7 x 4.8	141712	1.8	
	galvanized mesh grating mw 1.25/0.375	39.8 x 4.8	152301	4.8	
	galvanized mesh grating mw 1.25/0.375	19.7 x 4.8	152306	2.6	
	galvanized slotted grating (no TopFix)	39.8 x 4.8	152101	5.1	
	galvanized slotted grating (no TopFix)	19.7 x 4.8	152106	2.9	
	stainless steel slotted grating	39.8 x 4.8	152201	4.6	
	stainless steel slotted grating	19.7 x 4.8	152206	2.3	
	galvanized reinforced mesh grating mw 1.25/0.375	39.8 x 4.8	152503	6.8	
	galvanized reinforced mesh grating mw 1.25/0.375	19.7 x 4.8	152508	13.4	
	galvanized reinforced slotted grating	39.8 x 4.8	152711	11.4	
	galvanized reinforced slotted grating	19.7 x 4.8	152731	5.8	
	ductile iron slotted grating*	19.7 x 4.8	152411	7.7	

* Use 2 grating covers/per 40 inches.

1) For loading class index, see page 6.

For additional grates, see pages 62, 63, 70 and 71.

Applications

Parking lots, public areas

- Choose from 20 different grate options
- Select them according to weight load or appearance requirements

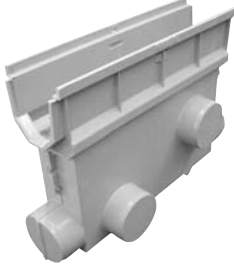
Swimming pools, recreational areas

- PVC slotted or stainless steel perforated grates offer aesthetically please surface
- Factory fabricated corner sections using full length grate eliminates field modifications



MEARIN 100 Accessories

Silt Box



Material: Fiberglass

Grating: No grating cover

Includes: Sediment bucket, odor seal and 2 end caps

Product Description	Dimension l x h [in]	Product #	lbs/unit
silt box	19.7 x 15.5	142000	14.5

MEARIN 100 Silt Box Grating Options

Grating Covers for Silt Box



Product Description	Dimension [inches]	Product #	lbs/unit	
grey PVC slotted grating*	19.7 x 4.8	141709	1.8	
beige PVC slotted grating*	19.7 x 4.8	141712	1.8	
galvanized mesh grating mw 1.25/0.375	19.7 x 4.8	152306	2.6	
stainless steel slotted grating	19.7 x 4.8	152206	2.3	
galvanized reinforced mesh grating mw 1.25/0.375	19.7 x 4.8	152508	3.3	
galvanized reinforced slotted grating	19.7 x 4.8	152731	8.0	
ductile iron slotted grating	19.7 x 4.8	152411	7.7	

For loading class index, see page 6.



MEARIN 100 Accessories

Corner Unit



Bend: 90 Degree

Product Description	Dimension l x w [in]	Product #	lbs/unit
corner unit	20.0 x 24.8	143050	6.6

Trap Set



Outlet Connector: 4 inches Ø

Includes: Odor seal, 2 end caps and bolts

Product Description	Product #	lbs/unit
PVC connector Ø 4"	141400	0.7

End Cap



Material: Polyethylene

Product Description	Cross-Section Ø [in]	Product #	lbs/unit
end cap	2.8	141350	0.1

Locking mechanism for MEARIN 100

Product Description	Product #	lbs/unit
with stainless steel bolts mesh, perf, plastic	141465	0.4
with stainless steel bolts for slotted and ductile iron gratings*	141460	0.2

* 1 bolt/per 19.7 inches

Installation Bracket

Bracket

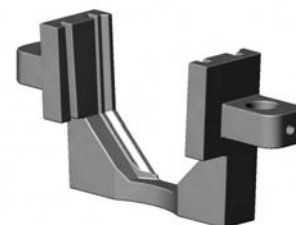


Material:

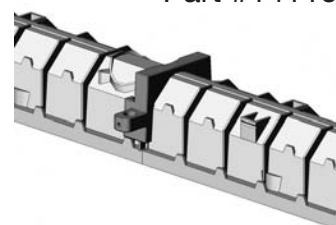
Product Description	Product #	lbs/unit
channel support bracket	141100	3

1. Arrange channels in a straight line, open side down.
2. Position each section allowing tongue and groove ends to overlap
3. Using the exterior ribs of the channel as a guide, insert bracket over channel overlap.
4. Push bracket down until it seats against bottom of channel. (If the bottom outlet knockout isn't completely visible, remove bracket and rotate 180 degrees.
5. Repeat this process for all channel joints.
6. Insert additional bracket near each end of the completed TD
7. Position the assembled trench drain open side up.
8. Insert rebar stakes thru holes on each side of bracket, bring to level and tighten set screws.

See page 9 for remaining instructions



Part #141100





MEARIN 100 Design Grating Covers

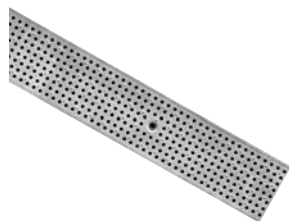
Width: 4.8"

For channel elements and silt boxes

Material: Stainless steel

Locking System: STANDARD lock bar

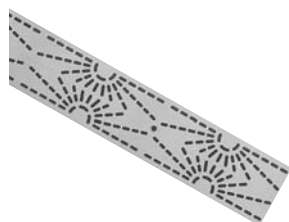
Load Class: A



Design Grating Cover "PERF"



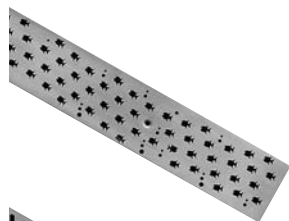
Material	Dimension [in]	Product #	Inlet Sectional Area [in ²]	lbs/unit
stainless steel	39.4 x 4.8	152205	67.0	3.7
stainless steel	19.7 x 4.8	152207	67.0	2.0



Design Grating Cover "RAYS"



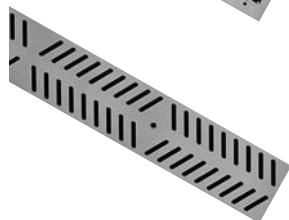
Material	Dimension [in]	Product #	Inlet Sectional Area [in ²]	lbs/unit
stainless steel	39.4 x 4.8	141741	86.0	3.1
stainless steel	19.7 x 4.8	141743	86.0	1.5



Design Grating Cover "FISH"



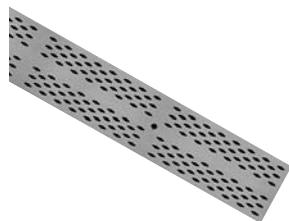
Material	Dimension [in]	Product #	Inlet Sectional Area [in ²]	lbs/unit
stainless steel	39.4 x 4.8	141745	59.0	3.1
stainless steel	19.7 x 4.8	141747	59.0	1.5



Design Grating Cover "RALLY"



Material	Dimension [in]	Product #	Inlet Sectional Area [in ²]	lbs/unit
stainless steel	39.4 x 4.8	141749	102.3	3.1
stainless steel	19.7 x 4.8	141751	102.3	1.5

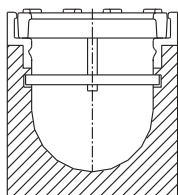


Design Grating Cover "DIAMOND"



Material	Dimension [in]	Product #	Inlet Sectional Area [in ²]	lbs/unit
stainless steel	39.4 x 4.8	141753	69.3	3.1
stainless steel	19.7 x 4.8	141755	69.3	1.5

Note



STANDARD

STANDARD: Consists of locking bar which fits in preformed recess in channel wall and stainless steel bolt (slotted or hex depending on grate type) which draws the grate to the bar. Available on all MEADRAIN products.

DESIGN grating covers



MEARIN 100 Design Grating Covers

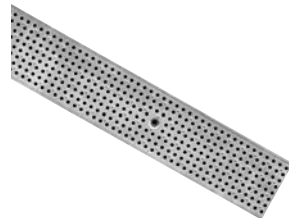
Width: 4.8"

For channel elements and silt boxes

Material: Galvanized steel

Locking System: STANDARD lock bar

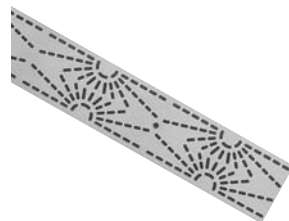
Load Class: A



Design grating cover "PERF"



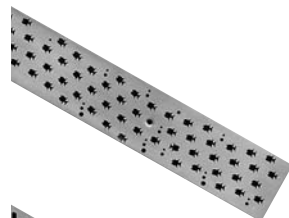
Material	Dimension [in]	Product #	Inlet Sectional Area [in ²]	lbs/unit
galvanized steel	39.4 x 4.8	152105	67.0	3.7
galvanized steel	19.7 x 4.8	152107	67.0	2.0



Design grating cover "RAYS"



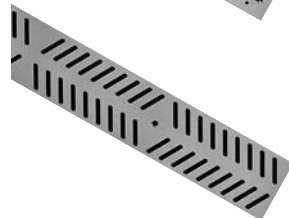
Material	Dimension [in]	Product #	Inlet Sectional Area [in ²]	lbs/unit
galvanized steel	39.4 x 4.8	141761	86.0	3.1
galvanized steel	19.7 x 4.8	141763	86.0	1.5



Design grating cover "FISH"



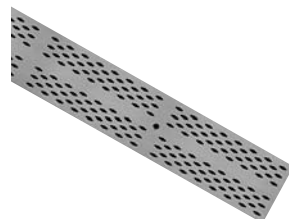
Material	Dimension [in]	Product #	Inlet Sectional Area [in ²]	lbs/unit
galvanized steel	39.4 x 4.8	141765	59.0	3.1
galvanized steel	19.7 x 4.8	141767	59.0	1.5



Design grating cover "RALLY"



Material	Dimension [in]	Product #	Inlet Sectional Area [in ²]	lbs/unit
galvanized steel	39.4 x 4.8	141769	102.4	3.1
galvanized steel	19.7 x 4.8	141771	102.4	1.5

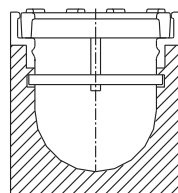


Design grating cover "DIAMOND"



Material	Dimension [in]	Product #	Inlet Sectional Area [in ²]	lbs/unit
galvanized steel	39.4 x 4.8	141773	69.3	3.1
galvanized steel	19.7 x 4.8	141775	69.3	1.5

Note



STANDARD

STANDARD: Consists of locking bar which fits in preformed recess in channel wall and stainless steel bolt (slotted or hex depending on grate type) which draws the grate to the bar. Available on all MEADRAINS products.