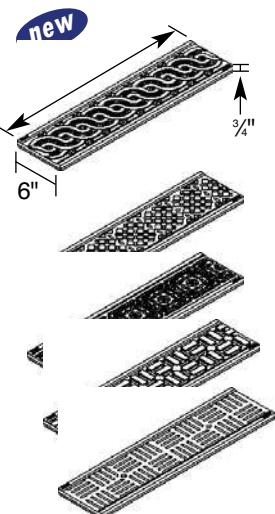


	Part No.	Description	Color	Pkg. Qty.	Wt. Ea. (lbs.)	Product Class	Specifications
<p>24" 6" 3/4" 1/2" x 3 1/16" Grate Opening</p>	660	2 ft. Channel Grate	White	24 ft	2.92	25DS	NDS #660, #661, #662, #663, #664, #665, 2 ft. Structural Foam Polyolefin secured channel grate with UV inhibitor. Open surface area 20.61 square inches per foot. 27.00 GPM per foot.
	661		Dark Gray	24 ft	2.92	25DS	
	661LG		Gray	24 ft	2.92	25DS	
	662		Green	24 ft	2.92	25DS	
	663	(See pg. 47)	Black	24 ft	2.92	25DS	
	664		Sand	24 ft	2.92	25DS	
665		Brick Red	24 ft	2.92	25DS		
		Use with Dura Slope Drains (page 40), Dura Slope Catch Basins (page 42).	ADA Compliant				
<p>24" 6" 3/4" 1/4" Grate Opening</p>	DS-670	2 ft. Plastic Perforated Channel Grate	Gray	24 Ft.	3.0	25DS	NDS #DS-670, 2' Structural Foam Polyolefin, secured channel grate with UV inhibitor, light traffic rated, heel-proof, ADA compliant. Open surface area 9.36 square inches per foot. 12.2 GPM per foot.
		Use with Dura Slope Drains (page 40), Dura Slope Catch Basins (page 42).	ADA Compliant/Heel-proof				
<p>24" 6" 3/4" 1/4" Grate Opening</p>	DS-226	2 ft. Stainless Steel Perforated Channel Grate	Steel	24 Ft.	3.22	25DS	NDS #DS-226 Stainless Steel grate, light traffic rated, heel-proof, ADA compliant. Open surface area 7.92 square inches per foot. 10.4 GPM per foot.
	DS-228	2 ft. Galvanized Steel Perforated Channel Grate	Steel	24 Ft.	3.22	25DS	
		Use with Dura Slope Drains (page 40), Dura Slope Catch Basins (page 42).	ADA Compliant/Heel-proof		(See pg. 47)		
<p>24" 6" 3/4" 5/16" x 4 1/16" Grate Opening</p>	DS-231	2 ft. Cast Iron Channel Grate	Black	1	15.00	25DS	#DS-231 2 ft. Heavy Duty Cast Iron Channel Grate. NDS #DS-232, 2 ft. Heavy Duty Ductile Iron Channel Grate. Open surface area 15.27 square inches per foot. 20.00 GPM per foot. H-20 Load Rating.
	DS-232	2 ft. Ductile Iron Channel Grate	Black	1	16.00	25DS	
		Use with Dura Slope Drains (page 40), Dura Slope Catch Basins (page 42).	ADA Compliant		(See pg. 47)		
<p>24" 6" 3/4" 3/8" x 4 7/16" Grate Opening</p>	DS-221	2 ft. Galvanized Steel Channel Grate	Steel	24 ft	4.00	25DS	NDS #DS-221, 2 ft. Galvanized Rolled Steel Grate. Open surface area 19.85 square inches per foot. 26.00 GPM per foot.
		Use with Dura Slope Drains (page 40), Dura Slope Catch Basins (page 42). Includes bracket to attach grate to channel and screws.			(See pg. 47)		

DECORATIVE GRATES



Part No.	Description	Color	Pkg. Qty.	Wt. Ea. (lbs.)	Product Class	Specifications
DS-601	Weave Pattern	Black	1	14.5	25DS	Decorative grates are made of ductile iron. Additional colors can be applied with powder coating for an additional fee.
DS-601R	Weave Pattern	Raw Iron	1	14.5	25DS	
DS-602	Diamond Pattern	Black	1	14.3	25DS	
DS-602R	Diamond Pattern	Raw Iron	1	14.3	25DS	
DS-603	Tile Pattern	Black	1	14.7	25DS	
DS-603R	Tile Pattern	Raw Iron	1	14.7	25DS	
DS-604	Brick Pattern	Black	1	14.3	25DS	
DS-604R	Brick Pattern	Raw Iron	1	14.3	25DS	
DS-609	Deco Slot	Black	1	14.5	25DS	
DS-609R	Deco Slot	Raw Iron	1	14.5	25DS	
		Use with Dura Slope Drains (page 40), Dura Slope Catch Basins (page 42).	ADA Compliant		(See pg. 47)	

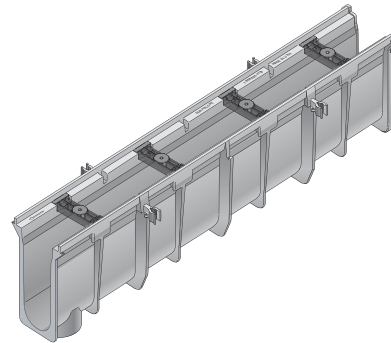


Note: All dimensions are nominal. All weights are for shipping purposes only. Availability is subject to change.

For customer service, please send your fax to: 1-800-726-1998 or call 1-800-726-1994.

DURA SLOPE™ CHANNEL DRAINS

NDS Dura Slope™ is a 6⁵/₈" wide, 4-foot-long trench drain system with a built-in slope of 0.7%. Each channel section is molded of gray structural foam polyethylene with UV inhibitors and has a 4" inside diameter with a 2" radius bottom. The system consists of 4-foot channel sections including 24 pre-sloped channel sections and 9 neutral channel sections. The sloped channel sections enable the system to extend to a length of 96 feet with a continuous slope.



Part No.	Description	Flow Rate GPM	Min. Inner Depth	Max. Inner Depth	Min. Outer Depth	Max. Outer Depth	Wt. Ea. (lbs.)
DS-090N	3.99" Deep Neutral Dura Slope Channel	75	3.998	3.998	5.354	5.760	7.45
DS-091	3.99" to 4.34" Deep Dura Slope Channel	75	3.998	3.998	5.690	5.770	7.52
DS-091N	4.34" Deep Neutral Dura Slope Channel	89	4.334	4.334	5.692	6.103	7.81
DS-092	4.34" to 4.67" Deep Dura Slope Channel	89	4.334	4.670	6.062	6.106	7.92
DS-093	4.67" to 5.00" Deep Dura Slope Channel	103	4.670	5.006	6.362	6.442	8.27
DS-094	5.00" to 5.34" Deep Dura Slope Channel	117	5.006	5.342	6.698	6.778	8.64
DS-094N	5.34" Deep Neutral Dura Slope Channel	131	5.342	5.342	6.700	7.111	8.93
DS-095	5.34" to 5.68" Deep Dura Slope Channel	131	5.342	5.678	7.034	7.114	8.99
DS-096	5.68" to 6.01" Deep Dura Slope Channel	145	5.678	6.014	7.370	7.450	9.36
DS-097	6.01" to 6.35" Deep Dura Slope Channel	159	6.014	6.350	7.706	7.786	9.74
DS-097N	6.35" Deep Neutral Dura Slope Channel	173	6.350	6.350	7.708	8.119	10.04
DS-098	6.35" to 6.69" Deep Dura Slope Channel	173	6.350	6.686	8.042	8.122	10.11
DS-099	6.69" to 7.02" Deep Dura Slope Channel	187	6.686	7.022	8.378	8.458	10.48
DS-100	7.02" to 7.36" Deep Dura Slope Channel	201	7.022	7.358	8.714	8.794	10.86
DS-100N	7.36" Deep Neutral Dura Slope Channel	215	7.358	7.358	8.716	9.127	11.16
DS-101	7.36" to 7.69" Deep Dura Slope Channel	215	7.358	7.694	9.050	9.130	11.23
DS-102	7.69" to 8.03" Deep Dura Slope Channel	229	7.694	8.030	9.386	9.466	11.60
DS-103	8.03" to 8.37" Deep Dura Slope Channel	243	8.030	8.366	9.722	9.802	11.98
DS-103N	8.37" Deep Neutral Dura Slope Channel	257	8.366	8.366	9.724	10.135	12.27
DS-104	8.37" to 8.70" Deep Dura Slope Channel	257	8.366	8.702	10.058	10.138	12.34
DS-105	8.70" to 9.04" Deep Dura Slope Channel	271	8.702	9.038	10.394	10.474	12.71
DS-106	9.04" to 9.37" Deep Dura Slope Channel	285	9.038	9.374	10.730	10.810	13.07
DS-106N	9.37" Deep Neutral Dura Slope Channel	299	9.374	9.374	10.732	11.143	13.39
DS-107	9.37" to 9.70" Deep Dura Slope Channel	299	9.374	9.710	11.066	11.146	13.4
DS-108	9.70" to 10.05" Deep Dura Slope Channel	313	9.710	10.046	11.402	11.482	13.83
DS-109	10.05" to 10.38" Deep Dura Slope Channel	327	10.046	10.382	11.738	11.818	14.20
DS-109N	10.38" Deep Neutral Dura Slope Channel	341	10.382	10.382	11.740	12.151	14.50
DS-110	10.38" to 10.71" Deep Dura Slope Channel	341	10.382	10.718	12.074	12.154	14.57
DS-111	10.71" to 11.05" Deep Dura Slope Channel	355	10.718	11.054	12.410	12.490	14.95
DS-112	11.05" to 11.39" Deep Dura Slope Channel	368	11.054	11.390	12.746	12.826	15.32
DS-112N	11.39" Deep Neutral Dura Slope Channel	382	11.390	11.390	12.785	13.158	15.6
DS-113	11.39" to 11.72" Deep Dura Slope Channel	382	11.390	11.726	13.082	13.162	15.69
DS-114	11.72" to 12.06" Deep Dura Slope Channel	396	11.726	12.062	13.418	13.498	16.06

Note: All dimensions are nominal. All weights are for shipping purposes only. Availability is subject to change.