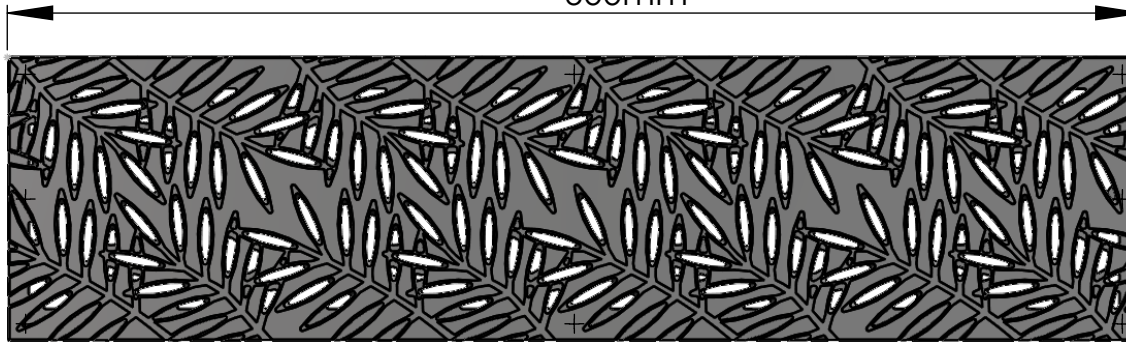


3 CASTINGS ARRAYED  
scale 1:7

600mm

20mm  
total

TOP  
scale 1:4



150mm

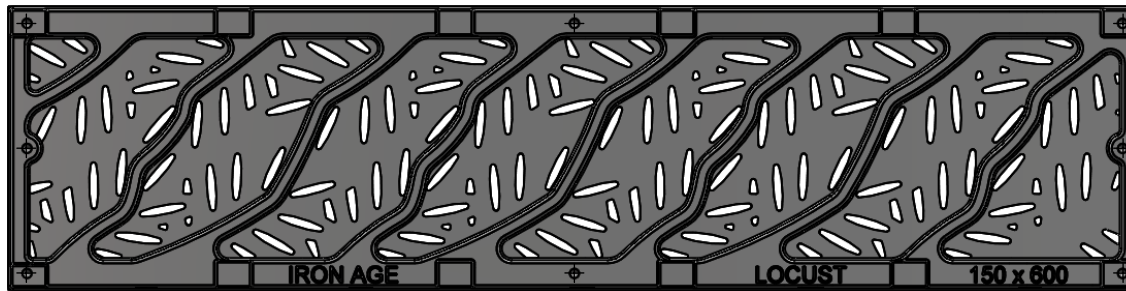
1.5mm  
feet

END  
scale 1:4

EDGE  
scale 1:4



BACK  
scale 1:4



(8X) drill point to locate  
bolt-down hole

NOTES:

1. Material: cast iron
2. Finish: natural finish
3. Total Thickness: 20mm
4. Fits frame by other
5. No openings greater than: 6mm
6. Due to casting inconsistencies all dimensions are nominal

 **IRON AGE** 2104 SW 152nd st #4 TEL 206.276.0925  
**DESIGNS** Burien, WA 98166 FAX 206.257.0318  
www.ironagedesigns.com

Locust trench cover 150mmx600mm

Aker Yards/Genesis pattern #4

JOB NO. 080610FL

DWG. NO. LOC.C.150X600

Drawn by: CD

rev. Date: 10/10/08

Scale: NTS

© 2012 Iron Age Designs